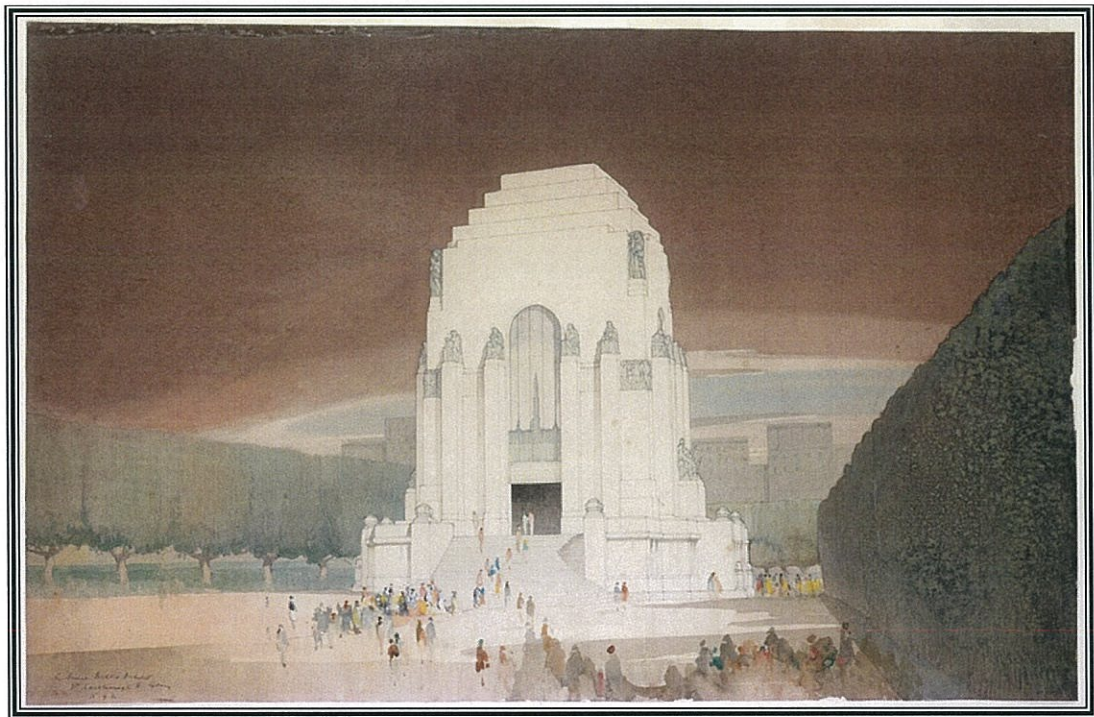




ANZAC MEMORIAL  
HYDE PARK SYDNEY



ANNUAL REPORT 2012-13



**ANZAC MEMORIAL**  
HYDE PARK SYDNEY

**Contents**

|           |   |
|-----------|---|
| <b>3</b>  | <b>Letter from the Trustees</b>   |
| <b>4</b>  | <b>Report of the Trustees of the ANZAC Memorial Building</b><br>Mission<br>Historical Background <ul style="list-style-type: none"><li>• The Building of the Memorial</li><li>• Description of the Memorial</li><li>• Rededication of the Memorial</li></ul>  |
| <b>7</b>  | <b>Access</b>   |
| <b>8</b>  | <b>Governance</b><br>The Trustees Legislative Charter<br>Who are the Trustees?<br>Meetings  |
| <b>10</b> | <b>Achievements</b><br>Building Management and Maintenance<br>Education and Interpretation Centre Concept<br>Public Program Highlights  |
| <b>15</b> | <b>Staffing</b><br>Organisational Chart<br>Establishment<br>ANZAC Memorial Staff<br>Staff Training<br>EEO requirements exemption  |
| <b>16</b> | <b>General Disclosures</b><br>Overseas travel<br>Publications<br>Accounts payable<br>Government Information (Public Access) Act 2009<br>Multicultural Policies and Services Program<br>Consultants<br>Insurances<br>Work Health Safety<br>Risk Management<br>Heritage Management<br>Consumer Response |
| <b>20</b> | <b>Audit Report</b>   |
| <b>23</b> | <b>Financial Statements</b>   |



ANZAC MEMORIAL  
HYDE PARK SYDNEY

---

---

The Hon Barry O'Farrell MP  
Premier of New South Wales  
Parliament House  
Sydney NSW 2000

The Hon Victor Dominello MP  
Minister for Citizenship and Communities  
Minister for Aboriginal Affairs  
Parliament House  
Macquarie Street  
Sydney NSW 2000

Dear Premier and Minister

I submit the 2012-2013 Annual Report of the Trustees of the ANZAC Memorial Building, in accordance with the *Annual Reports (Statutory Bodies) Act 1984*.

Office of Communities, the Trustees' current financial services provider, has prepared the financial information for the 12 month period.

The work of staff at the Office of Communities and the Audit Office is acknowledged and appreciated in the finalisation of the Financial Statements.

Yours sincerely

Darren Mitchell  
Honorary Secretary



ANZAC MEMORIAL  
HYDE PARK SYDNEY

## Report of the Trustees of the ANZAC Memorial Building for the year ended 30 June 2013

This is the twenty-ninth Report of the Trustees of the ANZAC Memorial Building since enactment of the Annual Reports (Statutory Bodies) Act and covers the period 1 July 2012 to 30 June 2013.

### **The Trustees' Mission for the Memorial is:**

1. To maintain and conserve the ANZAC Memorial as the principal State War Memorial in New South Wales.
2. To preserve the memory of those who have served our country in war by:  
collecting, preserving, displaying and researching military historical material and information relating to New South Wales citizens who served their country in war or in peace-keeping activities  
educating members of the public in the history of the Memorial and Australian military service through tours and displays.

### **Historical Background**

The ANZAC Memorial Building in Hyde Park South is the principal NSW Memorial to all Australians who serve their country in war. The building, completed in 1934, is a concrete structure, clad in stone, designed by C. Bruce Dellit, with sculptures by G Rayner Hoff. The Memorial is administered by a board of trustees appointed under the ANZAC Memorial (Building) Act 1923 No 27, as amended.

### **The Building of the Memorial**

On 25 April 1916, the first anniversary of the landing of the Australian Imperial Forces at Anzac Cove, a fund was opened to raise money to erect a permanent Memorial in Sydney. By the end of the war the fund had reached £60,000. There was, however, disagreement about the form and the location of the proposed Memorial.

During 1923, the ANZAC Memorial (Building) Act was passed and the decision was taken to erect the Memorial in Hyde Park. However, there was no further action until after the Cenotaph had been erected in Martin Place in 1927.

Parliament sanctioned the erection of the Memorial on its present site in 1929. A competition was held for the design of the Memorial and 117 entries were received from all over the world. On 9 July 1930 first prize was awarded to Bruce Dellit and tenders were called in November 1931. Kell and Rigby Pty Ltd were the successful building contractors.

The foundation stones were laid on 19 July 1932. The building was completed in 1934. Elements of the original design had to be deleted because of their cost, but the Pool of Reflection was built when the Council of the City of Sydney was granted unemployment relief funds for cost assistance purpose. The Memorial was officially opened by Prince Henry, Duke of Gloucester, on 24 November 1934.



## ANZAC MEMORIAL

HYDE PARK SYDNEY

### **Description of the Memorial**

The Memorial is located on the central north-south axis of Hyde Park South. The Memorial building is raised on a square podium which houses offices for returned service organisations. On the podium is the main circular domed hall which is approached by wide ceremonial stairs from the north and south. Entrances to the lower level are from the east and the west.

The concrete structure is clad in red granite from the Bathurst District. The building has a stepped geometric form which is typical of the Art Deco style. The stone cladding is unadorned. Sculpture is the decorative and symbolic element of the exterior. On each face of the building is a large window with a semicircular head, glazed in amber cathedral glass.

Large buttresses are surmounted by monumental seated figures which are cast in artificial stone. Each figure is a unit of the Australian Imperial Forces. On each corner is a standing figure representing the Army, Navy, Air Force and the Army Medical Corps. Bas-relief panels on the eastern side illustrate the Eastern Campaigns and on the west, the activities of the Australian Imperial Force (AIF) on the Western Front.

The main interior space is the circular Hall of Memory, entered from the north and south approaches. Within it, the Well of Contemplation allows visitors to look down into the Hall of Silence. The sculpture 'Sacrifice', is the central motif of the Memorial's design. Symbolising the spirit of courage, endurance and sacrifice, it depicts a body of a young Anzac soldier lying over a shield and sword. He is supported by three female figures and an infant, representing 'his best beloved' – mother, sister, wife and child. The infant also represents future generations. The 'Sacrifice' group is centered in a bronze ring, signaling the flames of destruction. The design of the space means that visitors in the Hall of Memory automatically bow their heads to view the 'Sacrifice' monument.

The walls of the Hall of Silence are clad in white New South Wales marble inscribed with the names of those areas where AIF operated and it is surrounded at the upper level by a wreath-like carved marble balustrade.

The walls of the Hall of Memory are also clad in white marble and lit by the amber glass of the main windows which are etched with the rising sun insignia of the AIF and the winged torch of liberty. The dome over the Hall is decorated with 120,000 stars representing each man and woman from New South Wales who served overseas in the 1914-1918 War.

Around the walls of the Hall of Memory are four niches, each representing a major theatre of war. On the walls of each niche are inscribed the names of principal battle areas and on the floors are stones from Flanders, Gallipoli, Palestine and New Guinea set in the rising sun motif.

Higher on the walls of the Hall of Memory are panels depicting the four branches of Australian Service.



## ANZAC MEMORIAL

HYDE PARK SYDNEY

On the east side of the space is the former archives room, which now displays the Flame of Remembrance. Its sculpted doorway symbolizes the flaming Sword of Sacrifice and the Rising Sun borne on the Wings of Time. On the western side are marble stairs leading down to the Hall of Silence.

Two external etched glass, vertical lift security screens, within the north and south stairs of the podium area of the Memorial, were completed in March 2000. The screens remain in a lowered position during the day, providing no visible alteration to the form of the Memorial. Designed as a deterrent to trespassers, the screens are also intended to make a positive contribution to the public realm through the incorporation of artwork. The artwork on the glass panels is made visible at night using fibre optic lighting recessed within the frame. Soldier-like figures in the landscape are interspersed with a poppy image in the artwork. The image of the poppy is used as a token of remembrance to the fallen.

An important component of the original design was the inclusion of offices for returned service associations within the ground floor of the Memorial. Originally, these spaces were occupied by the Returned Soldiers and Sailors Imperial League (later the Returned and Services League), TB Soldiers' Association and the Limbless Soldiers' Association, with the first two organisations still using spaces within the Memorial. The former RSL offices in the southern half of the ground floor of the Memorial have been used as an exhibition area since 1984, with a major redesign of the exhibition completed in late 2009. Associated with the exhibition, the restored Assembly Hall is used for the regular presentation of a short film about the Memorial, as well as being used for lectures and special events.

### **Rededication of the Memorial in 1984**

In the year of the Memorial's fiftieth anniversary, the Trustees successfully proposed an amendment to the ANZAC Memorial (Building) Act to rededicate the Memorial to all Australians who served their country in war.

This occurred on 30 November 1984, with the Governor of New South Wales, His Excellency Sir James Anthony Rowland, AC, KBE, DFC, AFC, unveiling a commemorative plaque.



ANZAC MEMORIAL  
HYDE PARK SYDNEY

## Access

Public access to the ANZAC Memorial extends from 9 am to 5 pm seven days per week. The Memorial is closed on Christmas Day and Good Friday. There is a formal Remembrance Service of around five minutes duration, conducted daily at 11 am.

Disability access is by the western centre door on the ground level. Another access option is at the eastern glass door in the Assembly Hall area, if required. There is also lift access from the ground floor (key operated by staff only) to the Hall of Memory and to the disabled toilet in the basement as required.

Workplace refurbishments within the Memorial are carried out in accordance with the Building Codes of Australia, including those provisions that relate to access for people with a disability.

An assessment was made in late 2011 to conduct tours for blind or low vision visitors to the Memorial. Former Vice President of the West Australian Association for the Blind, who is blind, assessed the site for access by the visually impaired and provided useful advice on structuring a tour of the building. He pointed out that the textured finishes inside the Hall of Memory and the Hall of Silence, particularly the engraved battle honours, the rocks set into the Memorial niches and art deco design elements within easy reach, provided ready material for a “touch tour” of the ANZAC Memorial.

Memorial staff may be contacted:

Telephone (02) 9267 7668

Facsimile (02) 9264 2039

Email [manager@anzacmemorial.nsw.gov.au](mailto:manager@anzacmemorial.nsw.gov.au)

Webpage [www.anzacmemorial.nsw.gov.au/home](http://www.anzacmemorial.nsw.gov.au/home)



ANZAC MEMORIAL  
HYDE PARK SYDNEY

## Governance

### The Trustees' Legislative Charter

*The ANZAC Memorial (Building) Act 1923* charges the Trustees with responsibility for the completion, management, maintenance and preservation of the ANZAC Memorial Building, as the principal NSW Memorial and for the care, management, maintenance and improvement of the site it occupies.

On 23 April 2010, the former Premier announced legislative reforms to the *Act* to give the Trustees an increased capacity to ensure that the commemorative integrity of the Memorial is maintained. The reforms were also directed at developing and enhancing the Memorial's educational, curatorial and volunteer capacity. These reforms to facilitate greater accountability and a strategically focussed Trust with effective connections to the centre of Government, cultural and educational institutions, were proclaimed on 15 November 2010. The Premier is Chair of the new Trustees, delegating this role to the Minister for Citizenship and Communities, and the RSL President is Deputy Chair.

The general control and management of the use of the ANZAC Memorial and its site is also the responsibility of the Trustees. At a meeting held on 22 November 2010, the new Trustees passed a resolution in accordance with section 9A of the *Act* delegating the management of the day to day administration, control and responsibility of the Memorial to the Director Veterans' Affairs. At this inaugural meeting the Director was also appointed Honorary Secretary to the Trust.

The Returned and Services League of Australia (New South Wales Branch) pursuant to section 5 (1) of the *Returned and Services League of Australia (New South Wales) Incorporation Act 1935* has taken up the significant role of Guardian to the Memorial, working to ensure that future generations continue to remember the military sacrifices of Australia's past. Mr Christopher Perrin, State Secretary of the League fulfils the role of custodian of the ANZAC Memorial Building.

### Who are the Trustees?

*The ANZAC Memorial (Building) Act No. 27, 1923*, as amended by ANZAC Memorial (Building) Amendment Act 2010, appoints the holders of the following offices as Trustees of the ANZAC Memorial Building:

1. The Premier of the State.
2. The Leader of the Opposition.
3. The Lord Mayor of Sydney.
4. The President of the Returned and Services League of Australia (New South Wales Branch).
5. The Director General of the Department of Education and Communities
6. The NSW Government Architect
7. The State Librarian
8. The President of the TB Sailors, Soldiers and Airmen's Association of NSW (Inc).
9. The Community representative





ANZAC MEMORIAL  
HYDE PARK SYDNEY

Section 3 of the Act provides for Trustees to appoint proxies to attend and vote at meetings of the Trustees. The Premier's proxy can also function as Chair.

As of 30 June 2013 the Trustees and their proxies were:

- Premier, The Hon Barry O'Farrell MP, (Proxy The Hon Victor Dominello MP)
- President of the NSW Branch RSL, Mr Don Rowe OAM, (Proxy Mr Chris Perrin)
- Leader of the Opposition, Mr John Robertson MP, (Proxy Mr Guy Zangari MP)
- Lord Mayor, Ms Clover Moore MP, (Proxy Councillor Phillip Black [to 10 Sept 2012] & Councillor John Mant)
- Director General of Education and Communities, Dr Michele Bruniges AM, (Proxy Mr Greg Prior)
- NSW Government Architect, Mr Peter Poulet, (Proxy Mr Bruce Pettman)
- State Librarian, Mr Alex Byrne (Proxy Mr Richard Neville)
- Mr Stan Poulsen President T.B. Sailors, Soldiers and Airmen's Association of NSW
- Mr Doug Dean AM, Community Representative (appointed 3rd December, 2012)

In the reporting period, three meeting of the Trustees were held: 10<sup>th</sup> September, 3<sup>rd</sup> December, 21<sup>st</sup> May

**Meeting Attendance**

- 10<sup>th</sup> September 2012: 6 Trustees or their Proxies; and the Hon Secretary
- 3<sup>rd</sup> December, 2012: 8 Trustees or their Proxies; the Hon Secretary and the Assistant Secretary
- 21<sup>st</sup> May, 2013: 7 Trustees or their Proxies; the Hon Secretary and the Assistant Secretary



ANZAC MEMORIAL  
HYDE PARK SYDNEY

## Achievements for 2012-13

### Building Management and Maintenance

The Building and Management Committee continued to meet during the year to deal with day to day matters on a regular basis, with support from the Government Architect's Office (GAO). There was limited building and maintenance carried out during 2012-13 other than planned minor works.

Works included:

- Repairs to gold lettering on the Foundation Stones
- Further investigations into enhanced audio speaker systems for the Assembly Hall, Exhibition area, Hall of Memory and foyer/lobby systems to facilitate increased use of these areas
- Minor granite paving and steps repairs
- Repairs and ongoing servicing of the air-conditioning system, including installation of a stainless steel hood over the external switchboards
- Minor furniture and great door repairs, including some repainting of the doors
- Refurbishment and upgrading of the lifting system for the north and south vertical glass gates. These works will be completed during the 2013-2014 financial year, including the establishment of a maintenance contract. Other works included replacement of anti-graffiti film on both gates and refinishing of the stainless steel frames
- Annual flood-testing and inspection of the lift to ensure lift shaft is water-tight
- Annual hazardous materials inspection and register update
- Resolving minor waterproofing issues, minor compliance work.
- Review of the CCTV system, with options for upgrading
- Establishment/re-establishing maintenance programs for new and existing equipment for the building respectively
- Ongoing review of future capital works items and maintenance schedules.

### Education and Interpretation Centre Concept

A Gateway review of the concept plans for the development of an Education/Interpretation Centre for the ANZAC Memorial was completed in December 2012. Further design development was carried out by GAO, with the preferred option including a grand entrance between the cascading water feature to the south of the Memorial in accordance with the original Bruce Dellit design.

### Other Highlights

On 19 April 2013, The Honourable Warren Snowdon MP Minister for Veterans Affairs declared the ANZAC Memorial Building to be a Military Memorial of National Significance



ANZAC MEMORIAL  
HYDE PARK SYDNEY

## **Public Program Highlights**

### **Exhibitions and displays July 2012 – June 2013**

The following exhibitions and displays were held at the Memorial in the reporting period:

#### **Fight, work or perish; Sydney under attack 1942**

The exhibition to commemorate 70 years since the attack on Sydney Harbour proved so popular that it was extended to late 2012. The Royal Australian Naval historical collection generously extended its loan of the tail and propeller from Lieut. Matsuo's midget submarine that was crippled in Taylors Bay in June 1942.

#### **1917 The bloodiest year of the war**

This display used objects from the ANZAC Memorial collection to tell personal stories about how Australian servicemen and their families dealt with the disastrous year 1917. Highlights of the collection included Tibby Cotter's lucky cricket ball from the 1904 test - he was killed at the charge of Beersheba, and the AIF uniform worn by Gunner Charles Pettit of Balmain while serving their guns during the battles of Passchendaele.

#### **Boer War Commemorative Service display**

Objects were loaned to create a small display to accompany the service held on the anniversary of the Treaty of Vereeniging that ended the Boer War (1899 – 1902).

#### **Silk Postcards and Woollen Uniforms**

This display was mounted to accompany a seminar held at the ANZAC Memorial to support the NSW History Council History Week as their theme this year was 'Threads'. The display featured an extensive collection of silk postcards commissioned and posted by Private Charles William Smith, a shoemaker from Manly. The cards were made from his wife and baby son. The most recent of the cards was written on 6 August 1918. Pte Smith was killed in action on 8 August.



ANZAC MEMORIAL  
HYDE PARK SYDNEY

**Anzac Memorial pre-booked tours 1/7/12 - 30/6/13**

|  |   |
|--|---|
| <p><b>Schools</b></p> <p>Kings School<br/>ELS College<br/>Granville Primary School<br/>Blaxland Primary School<br/>Pittwater High School<br/>Liverpool Boys High School<br/>Blue Mountains Grammar School<br/>Calrossy Anglican School, Tamworth<br/>Tumut High School<br/>North Shore Temple Emanuel School<br/>Northside Montessori School,<br/>Pymble</p> | <p>James Meehan High School<br/>Hornsby Primary School<br/>Hills District Primary School<br/>Canley Vale Primary School<br/>St Edwards College, Gosford<br/>Emmaus Catholic College, Kemps<br/>Creek<br/>MET Dark Forest High School<br/>A range of tertiary students studying<br/>history at Macquarie University and<br/>English at Sydney University</p> |
| <p><b>Community Groups</b></p> <p>Chinese Tourist group<br/>Friendship Force Southern Sydney<br/>Star Service for Veterans<br/>Campbelltown City Probus group<br/>Cardinal Freeman Village, Ashfield<br/>Bales Park Vacation Care<br/>Ability Options, Handicapped Youth</p>   | <p>International Sea Cadet Corp<br/>Hills Holroyd/Parramatta Resource<br/>Centre<br/>Indigenous Veterans' Service<br/>Hawkesbury Cub Scouts<br/>Earlwood/Bardwell Park Probus</p>   |



**ANZAC MEMORIAL**  
HYDE PARK SYDNEY

**Events and Commemoration Services 2012 - 2013**

**2012**

- 19 July - Battle of Fromelles service
- 20 July- Wreathlaying by AATTV veterans
- 7 August - Guided tour of the ANZAC Memorial for the new Ambassador of Turkey
- 23 August - NZ RSA star ceremony
- 18 September - Launch of the book Bound Down By Blood: the Battle of Mont St Quentin 1918 by Michelle Bomford
- 15 October - Star Ceremony for DVA Veterans pilgrimage to El Alamein
- 1 November - Book reading by Dr Ross McMullin from Farewell Dear Friends
- 11 November - 9 RAR Birthday Service for Remembrance Day

**2013**

- 12 February - Tour of military history sites of Sydney for the Mayor of Pozieres and wreathlaying service
- 25 April - Anzac Day Service
- 20 May - Star Ceremony for DVA Veterans pilgrimage to battle of Atlantic commemoration
- 26 May - Boer War Anniversary commemoration service
- 31 May - Indigenous Veterans Service
- 2 June - RAAF in Bomber Command commemoration service
- 2 June - Italian National Day Commemoration Service

**Presentations and Publications by the Executive Manager of the ANZAC Memorial**

**2012**

- 28 July - "9 Australian Division at the Battle of El Alamein" keynote address at the re-dedication of the El Alamein Fountain, Kings Cross
- 4 August - "Was the 73rd Regiment in NSW Underemployed?" Paper at the Australian Napoleonic Association conference
- 28 August - Filmed interview on "the Australian Light Horse in the First World War" for Whaler: Australia's War Horse documentary by Magofilms
- 15 September - "Stories the ANZAC Memorial tells" illustrated lecture at the New South Wales Family History Association Conference
- 20 September - "Star Ceremonies at the ANZAC Memorial" presentation to the quarterly meeting of the Federation of Naval Ships Association
- 28 October - Guest on Macca on Sunday Morning ABC Radio talking about the NSW Premier's Anzac Memorial scholarship
- 30 October - "Beersheba, The Great Charge" presentation to the Australian antique and historical arms Association of Australia



ANZAC MEMORIAL  
HYDE PARK SYDNEY

- 31 October - “Beersheba Charge: Wednesday 31 October 1917” paper at a joint seminar with Prof Stephen Garton at the ANZAC Memorial
- 8 November - “Australia under Attack” at the Kogarah Historical Society meeting at the Kogarah School of Arts
- 9 November - “Frenchmen in the AIF” for Alliance Francaise

**2013**

- 28 February - “1918, The Year of Victory at a Cost” for the Royal Australian Historical Society
- 7 March - “Memorials to the First World War” for the Royal Australian Historical Society
- 30 April - “The ANZAC Memorial Building” presentation to Parliamentary Friends of Anzac
- 1 May - “Introducing the ANZAC Memorial” a tour for DVA staff
- 22 May - “A History of the ANZAC Memorial building” paper at the Trustees Local Government War Memorials Forum
- 30 June - “1934, the Duke of Gloucester’s Visit” on ABC Radio

**Guardians of the ANZAC Memorial (Corps of Guards)**

The Returned and Services League of Australia (NSW Branch) in its role as Guardian of the ANZAC Memorial has formed a Corps of volunteers to become Guardians on duty. Volunteers are selected from RSL Sub Branches across NSW. Their role is to present a public face at the Memorial to welcome visitors and assist at commemorative events within the Memorial precinct.

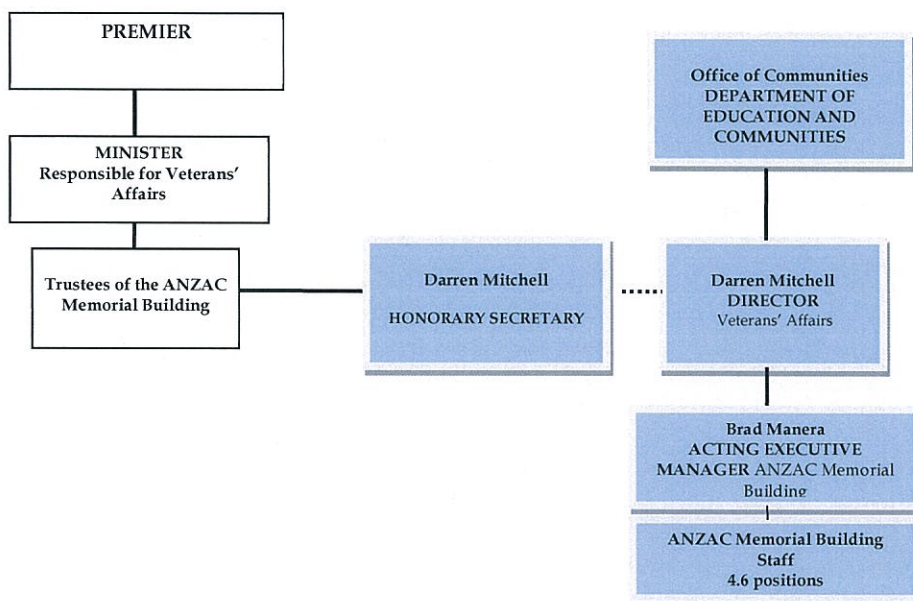
The Corps of Guards provide two Guardians on duty on weekends to interact with members of the public to increase their awareness of the ANZAC Memorial, the Anzac spirit and the sacrifices made by our service men and women in our nation’s conflicts in war.



**ANZAC MEMORIAL**  
HYDE PARK SYDNEY

**Staffing**

**Organisational Chart - Veterans' Affairs**



**Establishment**

The following personnel have been employed at the Memorial since 2009.

|                                   | 2012-13 | 2011-2012 | 2010 |
|-----------------------------------|---------|-----------|------|
| A/Executive Manager               | 1       | 1         | 1    |
| Property Manager                  | 1       | 1         | 1    |
| Chief Guide                       | -       | 1         | 1    |
| Memorial Guides (full-time)       | 3.6     | 3         | 3    |
| Memorial Guides Officers (casual) | 1       | 1         | 1    |

**ANZAC Memorial Staff 2013**

- Mr Brad Manera, Acting Executive Manager
- Mr Greg Read, SC, Property Manager
- Mr David Bruderlin, Property Manager (part-time from 14/6/13)
- Mrs Belinda Mitrovich, Property Manager (part-time from 14/6/13)
- Mr Michael Wilson, Memorial Guide
- Mr Patrick Holmes, Memorial Guide
- Dr Anthony Scott, Memorial Guide
- Mr David Evans, Memorial Guide (casual)



ANZAC MEMORIAL  
HYDE PARK SYDNEY

### **Staff Training**

In 2012-13 there was a continuation of staff developing skills in assisting the public with researching their families' military history. Under the direction of the A/Executive Manager, a major internal training program was completed to improve guide knowledge and presentation skills. The Memorial enhanced staff professional knowledge through attendance at a range of technical seminars and conferences.

### **Equal Employment Opportunity (EEO) requirements exemption**

The New South Wales Treasurer exempted the Trustees from disclosing equal employment opportunity information because the small numbers employed by the Trustees would render meaningless any statistics presented. Since the formation of the volunteer Corps of Guards at the Memorial, however, there have been three women serving as guards who provide regular support to the public at the Memorial and participate on ceremonial occasions. The Memorial also holds an Indigenous Veterans' Commemorative Service annually within Reconciliation Week, with consultation with the Indigenous community to ensure that Aboriginal and Torres Strait Islander service men and women are appropriately acknowledged and honoured.

## **General Disclosures**

### **Overseas Travel**

The Acting Executive Manager, Brad Manera, travelled to France and Belgium from 10 to 25 April 2013 as the tour historian for four classes of high school history students from regional New South Wales. His participation in these tours gave the students a solid grounding in Australian and specifically regional New South Wales involvement in the First World War and of commemoration of the impact of that war. The tour raised awareness of the expertise at the ANZAC Memorial among the education community of New South Wales. All travel and accommodation costs associated with Mr Manera's participation on the tour were met by Academy Travel.

### **Publications**

Available free of charge to the public from the ANZAC Memorial Building are:

- copies of Annual Reports dating from 1985;
- an information brochure; and
- Standard Operating Procedures are gazetted as appropriate.

### **Accounts Payable**

No interest was paid to creditors during this period.

### **Government Information (Public Access) Act 2009**

The Trustees were not aware of any Freedom of Information implications. Statistical information would be included in Department of Education and Communities reporting.





ANZAC MEMORIAL  
HYDE PARK SYDNEY

### **Multicultural Policies and Service Program**

The Trustees are aware of the principles of cultural diversity and apply them as appropriate. Ethnic communities may apply to the Trustees for approval to use the Memorial for purposes consistent with the provisions of the *ANZAC Memorial (Building) Act*. The Memorial has supported Italian, Korean and Greek commemorative services in the reporting year as well as a Korean and a Greek exhibition. The volunteer Corps of Guards also have fluent speakers in French and Greek to assist the public.

### **Consultants**

No consultants were engaged during the reporting year.

### **Insurances**

Since 1 July 1993, the Treasury Managed Fund has provided unlimited insurance cover for the Memorial and its Trustees in the fields of Property, Public Liability and other Miscellaneous insurance. Under the terms of cover, the Trustees are required to absorb property losses of less than \$300. There was one in this category. There were 5 property claims and there were no Public Liability Claims.

### **Work Health Safety (WHS)**

Health and safety issues are continually monitored by the Trustees through the Memorial Management and staff consultation.

The Memorial undertook measures to meet Office of Communities WHS standards during 2012-13.

Staff attained First Aid Certificate training in HLTCPR201A Perform CPR, and 21658VIC Course in automated external defibrillation.

### **Risk Management Activities**

Staff at the Memorial monitor operations to ensure risk is identified. The monthly building and management committee also considers matters of risk.

### **Internal audit and risk management policy attestation**

As a small agency, the Trustees are progressing an exemption from Treasury to comply with the Internal Audit and Risk Management policy for the NSW Public Sector (TPP09-5).



## ANZAC MEMORIAL

HYDE PARK SYDNEY

### Heritage Management

The ANZAC Memorial was included on the State Heritage Register (SHR) on 23 April 2010 (listing # 01822) in recognition of its heritage significance to the state of NSW. Inclusion on the SHR is an indication that the Memorial is of particular importance to the people of NSW, enriches our understanding of our history and identity, is legally protected as a heritage item under the NSW Heritage Act, and requires approval from the Heritage Council of NSW for major changes. (Further information on the SHR generally is available at:

[http://www.heritage.nsw.gov.au/07\\_subnav\\_04b.htm](http://www.heritage.nsw.gov.au/07_subnav_04b.htm)).

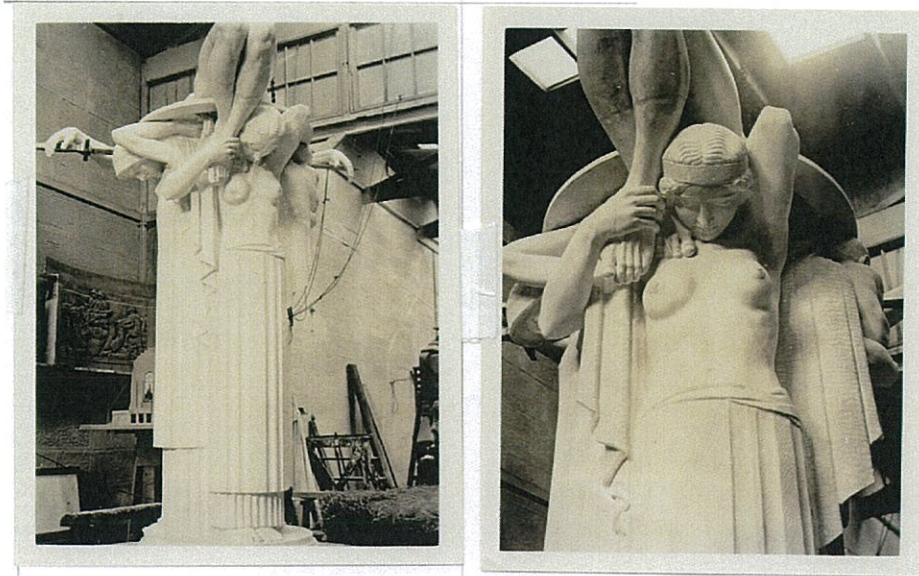
The statement of significance included in the SHR listing provides a summary of the identified heritage significance of the Memorial, as follows:

*The ANZAC Memorial is of historical significance to the State for its embodiment of the collective grief of the people of NSW at the loss of Australian servicemen and women since World War I. It is associated with the landing of Australian troops at Gallipoli on 25 April 1915, since fundraising for the memorial was established on the first anniversary of the landing. It is also associated with returned servicemen and their organisations including the RSL, which lobbied for the erection of the monument and occupied offices within it. The ANZAC Memorial is of State aesthetic significance as a great work of public art which is arguably the finest expression of Art Deco monumentality in Australia. The result of an outstanding creative collaboration between architect Bruce Dellit and sculptor Rayner Hoff, it contains complex symbolic embellishments that reinforce and enhance the commemorative meanings of the building. Its landscape context in Hyde Park was purposefully designed for it by Dellit including the large Pool of Reflection lined by poplars. Its positioning on a major axis linked to the Archibald Fountain contributes significantly to the physical character of Hyde Park and the city of Sydney. The ANZAC Memorial is of State significance as the largest and most ambitious of the numerous war memorials constructed throughout NSW after the Great War. The memorial is also representative as NSW's contribution to the group of 'national war memorials', whereby each state capital city developed its own major war memorial in the inter-war period. In this group the ANZAC Memorial is outstanding in its size, integrity and aesthetic appeal.*



## ANZAC MEMORIAL

HYDE PARK SYDNEY



The Memorial is also identified as a heritage item in the *Sydney Local Environmental Plan 2005* (No 185 CSHI No 8024 in Schedule 8 Central Sydney heritage items, Part1 Heritage items).

In accordance with the *NSW Heritage Act 1977* and the *State Agency Heritage Guide 2005*, the Trustees of the ANZAC Memorial report that during the reporting period maintenance and minor capital works were undertaken, to maintain the condition of the ANZAC Memorial to reflect its state heritage significance. These works are detailed elsewhere in this report.

### **Consumer Response**

As a service-based organisation, customer feedback is of prime importance to the ANZAC Memorial and is closely and regularly monitored. With this in mind, the Memorial keeps a pro-forma 'Feedback Form' for this specific purpose to record any compliments or complaints. In addition, a general file is also maintained for oral compliments as well as complaints. In particular, major complaints are dealt with in writing through the Honorary Secretary on behalf of the Trustees.



## INDEPENDENT AUDITOR'S REPORT

### Trustees of the ANZAC Memorial Building

To Members of the New South Wales Parliament

I have audited the accompanying financial statements of Trustees of the ANZAC Memorial Building (the Trustees), which comprise the statement of financial position as at 30 June 2013, the statement of comprehensive income, statement of changes in equity and statement of cash flows for the year then ended, notes comprising a summary of significant accounting policies and other explanatory information.

### Opinion

In my opinion, the financial statements:

- give a true and fair view of the financial position of the Trustees as at 30 June 2013, and of its financial performance and its cash flows for the year then ended in accordance with Australian Accounting Standards
- are in accordance with section 41B of the *Public Finance and Audit Act 1983* (the PF&A Act) and the Public Finance and Audit Regulation 2010

My opinion should be read in conjunction with the rest of this report.

### The Trust Members' Responsibility for the Financial Statements

The Trust Members are responsible for the preparation of the financial statements that give a true and fair view in accordance with Australian Accounting Standards and the PF&A Act and for such internal control as they determine is necessary to enable the preparation of financial statements that give a true and fair view and that are free from material misstatement, whether due to fraud or error.

### Auditor's Responsibility

My responsibility is to express an opinion on the financial statements based on my audit. I conducted my audit in accordance with Australian Auditing Standards. Those Standards require that I comply with relevant ethical requirements relating to audit engagements and plan and perform the audit to obtain reasonable assurance about whether the financial statements are free from material misstatement.

An audit involves performing procedures to obtain audit evidence about the amounts and disclosures in the financial statements. The procedures selected depend on the auditor's judgement, including the assessment of the risks of material misstatement of the financial statements, whether due to fraud or error. In making those risk assessments, the auditor considers internal control relevant to the Trustees' preparation of the financial statements that give a true and fair view in order to design audit procedures appropriate in the circumstances, but not for the purpose of expressing an opinion on the effectiveness of the Trustees' internal control. An audit also includes evaluating the appropriateness of accounting policies used and the reasonableness of accounting estimates made by the Trust Members, as well as evaluating the overall presentation of the financial statements.

I believe the audit evidence I have obtained is sufficient and appropriate to provide a basis for my audit opinion.

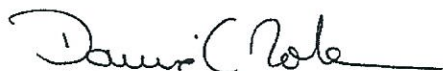
My opinion does *not* provide assurance:

- about the future viability of the Trustees
- that it has carried out its activities effectively, efficiently and economically
- about the effectiveness of its internal control
- about the security and controls over the electronic publication of the audited financial statements on any website where they may be presented
- about other information which may have been hyperlinked to/from the financial statements

## **Independence**

In conducting my audit, I have complied with the independence requirements of the Australian Auditing Standards and other relevant ethical pronouncements. The PF&A Act further promotes independence by:

- providing that only Parliament, and not the executive government, can remove an Auditor-General
- mandating the Auditor-General as auditor of public sector agencies, but precluding the provision of non-audit services, thus ensuring the Auditor-General and the Audit Office of New South Wales are not compromised in their roles by the possibility of losing clients or income.



David Nolan  
Director, Financial Audit Services

18 October 2013  
SYDNEY



ANZAC MEMORIAL  
HYDE PARK SYDNEY

**Trustees of the ANZAC Memorial Building – Response to Significant Matters in the Audit Office’s Client Service Report**

**Lack of Internal Audit Review**

TAMB did not have a formal internal audit program for the year ended 30 June 2013. We understand the Department of Education and Communities internal audit reviews for 2012-13 covered the shared service areas of finance, human resources, administration and related governance systems that did have relevance to TAMB. We understand an internal audit program specific to TAMB for the 2013-14 has now been established with the Department of Education and Communities Audit Directorate.

**Response**

A specific internal audit program for the Trustees has been established for 2013-14.

**Absence of Regular Key Reconciliations.**

Regular reconciliations were not performed for key financials balances such as fixed assets, accounts receivable, accounts payable and cash.

We understand that monthly reconciliations were performed from June 2013.

**Response:**

From 2013-14 TAMB transactions have been transferred to a separate company within OoC systems to facilitate regular monthly reconciliations.

THE TRUSTEES OF THE ANZAC MEMORIAL BUILDING

FINANCIAL STATEMENTS FOR THE YEAR ENDED 30 JUNE 2013


**STATEMENT IN ACCORDANCE WITH S41C(1B) and (1C) OF  
THE PUBLIC FINANCE AND AUDIT ACT, 1983 AND UNDER CLAUSE 7 OF THE PUBLIC  
FINANCE AND AUDIT REGULATIONS 2010**


In accordance with a resolution of the members of The Trustees of the ANZAC Memorial Building, we declare on behalf of the Trustees that in our opinion: -

1. The accompanying financial statements and notes thereon exhibit a true and fair view of the financial position of The Trustees of the ANZAC Memorial Building as at 30 June 2013 and financial performance for the year then ended.
2. The financial statements have been prepared in accordance with applicable Australian Accounting Standards (which include Australian Accounting Interpretations and Other Authorative pronouncements of the Australian Accounting Standards Board), the provisions of the Public Finance and Audit Act 1983 and Public Finance and Audit Regulation 2010 and the Treasurer's Directions.
3. As at the date of signing this statement, we are not aware of any circumstances which would render any particulars included in the financial statements to be misleading or inaccurate.

Signed in accordance with the resolution of the Trust members.

Dated 18 OCTOBER 2013.

  
Mr Donald Rowe OAM  
Deputy Chairperson  
The Trustees of the ANZAC Memorial Building  
.....2013

  
Mr Peter Poulet  
Member  
The Trustees of the ANZAC Memorial  
Building  
18 Oct, 2013

**THE TRUSTEES OF THE ANZAC MEMORIAL BUILDING  
STATEMENT OF COMPREHENSIVE INCOME  
FOR THE YEAR ENDED 30 JUNE 2013**

|  | <u>Notes</u> | <u>2013</u>      | <u>2012</u>        |
|--|--------------|------------------|--------------------|
|  |              | \$               | <u>(18 Months)</u> |
|  |              |                  | \$                 |
| <b>Expenses excluding losses</b>                                     |              |                  |                    |
| Operating expenses   |              |                  |                    |
| Employee related   | 2(a)         | 620,921          | 861,332            |
| Other operating expenses   | 2(b)         | 774,678          | 1,122,160          |
| Depreciation   | 2(c)         | 103,017          | 27,839             |
| <b>TOTAL EXPENSES EXCLUDING LOSSES</b>                               |              | <u>1,498,616</u> | <u>2,011,331</u>   |
| <br><b>Revenue</b>   |              |                  |                    |
| Contribution from NSW Government                                     | 3(a)         | 2,999,697        | 1,565,000          |
| Investment revenue   | 3(b)         | 39,975           | 14,327             |
| Other revenue  | 3(c)         | 34,783           | 117,392            |
| <b>Total Revenue</b>   |              | <u>3,074,455</u> | <u>1,696,719</u>   |
| <br><b>Net result</b>  |              | <u>1,575,839</u> | <u>(314,612)</u>   |
| <br><b>Other comprehensive income</b>                                |              |                  |                    |
| Net decrease in property, plant and equipment<br>revaluation surplus |              | -                | (6,550,703)        |
| <b>Total other comprehensive income</b>                              |              | <u>-</u>         | <u>(6,550,703)</u> |
| <br><b>TOTAL COMPREHENSIVE INCOME</b>                                |              | <u>1,575,839</u> | <u>(6,865,315)</u> |

*The accompanying notes form part of these financial statements.*



**THE TRUSTEES OF THE ANZAC MEMORIAL BUILDING  
STATEMENT OF FINANCIAL POSITION AS AT 30 JUNE 2013**

|                                  | <u>Notes</u> | <u>2013</u><br>\$ | <u>2012</u><br>\$ |
|----------------------------------|--------------|-------------------|-------------------|
| <b>ASSETS</b>                    |              |                   |                   |
| <b>Current Assets</b>            |              |                   |                   |
| Cash and cash equivalents        | 10(a)        | 1,693,846         | 881,274           |
| Receivables                      | 6            | 112,855           | 130,759           |
| <b>Total Current Assets</b>      |              | <u>1,806,701</u>  | <u>1,012,033</u>  |
| <b>Non-Current Assets</b>        |              |                   |                   |
| Property, plant and equipment    |              |                   |                   |
| - Land and building              | 5            | 29,897,355        | 29,889,409        |
| - Plant and equipment            | 5            | 194,790           | 215,138           |
| Memorial collection              | 5            | 302,445           | 302,445           |
| <b>Total Non-Current Assets</b>  |              | <u>30,394,590</u> | <u>30,406,992</u> |
| <b>Total Assets</b>              |              | <u>32,201,291</u> | <u>31,419,025</u> |
| <br><b>LIABILITIES</b>           |              |                   |                   |
| <b>Current Liabilities</b>       |              |                   |                   |
| Payables                         | 7            | 1,015,910         | 1,808,085         |
| Provisions                       | 8            | 68,497            | 69,895            |
| <b>Total Current Liabilities</b> |              | <u>1,084,407</u>  | <u>1,877,980</u>  |
| <b>Total Liabilities</b>         |              | <u>1,084,407</u>  | <u>1,877,980</u>  |
| <b>Net Assets</b>                |              | <u>31,116,884</u> | <u>29,541,045</u> |
| <br><b>EQUITY</b>                |              |                   |                   |
| Reserves                         |              | 20,343,092        | 20,343,092        |
| Accumulated funds                |              | 10,773,792        | 9,197,953         |
| <b>Total Equity</b>              |              | <u>31,116,884</u> | <u>29,541,045</u> |

*The accompanying notes form part of these financial statements.*

**THE TRUSTEES OF THE ANZAC MEMORIAL BUILDING  
STATEMENT OF CHANGES IN EQUITY  
FOR THE YEAR ENDED 30 JUNE 2013**

|  | <u>Notes</u> | <u>Accumulated<br/>Funds</u> | <u>Asset<br/>Revaluation<br/>Surplus</u> | <u>Total</u> |
|--|--------------|------------------------------|--|--------------|
|  |              | \$                           | \$                                       | \$           |
| <b>Balance at 1 July 2012</b>                        |              | 9,197,953                    | 20,343,092                               | 29,541,045   |
| <b>Net result for the year</b>                       |              | 1,575,839                    | -  | 1,575,839    |
| <b>Other comprehensive income:</b>                   |              |                              |  |              |
| Net decrease in property,<br>plant and equipment     |              | -                            | -  | -            |
| <b>Total other comprehensive income</b>              |              | -                            | -  | -            |
| <b>Total comprehensive income for the year</b>       |              | 1,575,839                    | -  | 1,575,839    |
| <b>Balance at 30 June 2013</b>                       |              | 10,773,792                   | 20,343,092                               | 31,116,884   |
| <br>   |              |                              |  |              |
| <b>Balance at 1 January 2011</b>                     |              | 9,512,565                    | 26,893,795                               | 36,406,360   |
| <b>Net result for the period</b>                     |              | (314,612)                    | -  | (314,612)    |
| <b>Other comprehensive income:</b>                   |              |                              |  |              |
| Net decrease in property,<br>plant and equipment     |              | -                            | (6,550,703)                              | (6,550,703)  |
| <b>Total other comprehensive income</b>              |              | -                            | (6,550,703)                              | (6,550,703)  |
| <b>Total comprehensive income for the<br/>period</b> |              | (314,612)                    | (6,550,703)                              | (6,865,315)  |
| <b>Balance at 30 June 2012</b>                       |              | 9,197,953                    | 20,343,092                               | 29,541,045   |

*The accompanying notes form part of these financial statements.*

**THE TRUSTEES OF THE ANZAC MEMORIAL BUILDING  
STATEMENT OF CASH FLOWS FOR THE YEAR ENDED 30 JUNE 2013**

|  | <u>2013</u>                   | <u>2012</u>           |
|--|-------------------------------|-----------------------|
|  | \$                            | \$                    |
| <u>Notes</u>   |                               | <u>(18 Months)</u>    |
| <b>CASH FLOWS FROM OPERATING ACTIVITIES</b>          |                               |                       |
| <b>Payments</b>                                      |                               |                       |
| Employee related                                     | (688,982)                     | (634,879)             |
| Other  | (1,633,134)                   | (299,267)             |
| <b>Total Payments</b>                                | <u>(2,322,116)</u>            | <u>(934,146)</u>      |
| <b>Receipts</b>                                      |                               |                       |
| Contribution from NSW Government                     | 3,151,971                     | 1,565,000             |
| Interest received                                    | 39,975                        | 14,327                |
| Other  | 33,359                        | 104,851               |
| <b>Total Receipts</b>                                | <u>3,225,305</u>              | <u>1,684,178</u>      |
| <b>NET CASH FLOWS FROM OPERATING ACTIVITIES</b>      | 10(b) <u>903,189</u>          | <u>750,032</u>        |
| <b>CASH FLOW USED IN INVESTING ACTIVITIES</b>        |                               |                       |
| Purchases of land and buildings, plant and equipment | (90,617)                      | -                     |
| <b>NET CASH FLOWS USED IN INVESTING ACTIVITIES</b>   | <u>(90,617)</u>               | -                     |
| <b>NET INCREASE IN CASH</b>                          | 812,572                       | 750,032               |
| Opening cash and cash equivalents                    | 881,274                       | 131,242               |
| <b>CLOSING CASH AND CASH EQUIVALENTS</b>             | 10(a) <u><u>1,693,846</u></u> | <u><u>881,274</u></u> |

*The accompanying notes form part of these financial statements.*

**THE TRUSTEES OF THE ANZAC MEMORIAL BUILDING  
NOTES TO THE FINANCIAL STATEMENTS  
FOR THE YEAR ENDED 30 JUNE 2013**

**1 STATEMENT OF SIGNIFICANT ACCOUNTING POLICIES**

**(a) Basis of Preparation**

The financial statements are general purpose financial statements that have been prepared in accordance with applicable Australian Accounting Standards and interpretations, the requirements of the Public Finance and Audit Act 1983 and Regulation and Financial Reporting Directions issued by the Treasurer.

The Memorial is administered by a Board of Trustees appointed under the ANZAC Memorial (Building) Act 1923. The financial statements cover The Trustees of the ANZAC Memorial Building as an individual entity (the "entity"). The entity is domiciled in New South Wales.

The Trustees of the ANZAC Memorial Building is a not for profit entity and it has no cash generating units. The entity is considered a going concern on the basis of the support provided by the NSW Government.

The registered office of The Trustees of the ANZAC Memorial Building and the principal place of business is:

The Trustees of the ANZAC Memorial Building  
ANZAC Memorial  
Hyde Park  
SYDNEY 2000

The entity obtained approval from NSW Treasury on 13 February 2012 to change the commencement date of the financial year from 1 January to 1 July. Accordingly the comparatives in 2012 have been presented for eighteen months beginning from 1 January 2011 to 30 June 2012.

The financial statements have been prepared on an accruals basis and are based on historical costs and do not take into account changing money values or, except where stated, current valuations of non-current assets. All amounts are presented in Australian Dollars. The financial statements were authorised for issue by the Trustees on 18 OCTOBER 2013

**(b) Cash and Cash Equivalents**

For the purposes of the Statement of Cash Flows, cash includes cash equivalents, cash on hand and at call deposits with banks or financial institutions.

**(c) Income Tax**

The entity is exempt from income tax.

**THE TRUSTEES OF THE ANZAC MEMORIAL BUILDING**  
**NOTES TO THE FINANCIAL STATEMENTS**  
**FOR THE YEAR ENDED 30 JUNE 2013**

**d) Property, Plant and Equipment**

*Plant and Equipment*

Plant and equipment is recorded at cost which approximates fair value less, where applicable, any accumulated depreciation and any impairment value.

Items costing more than \$5,000 are capitalised. If an item forms part of a network, its cost is aggregated with other items within that network when applying the capitalisation threshold.

*Impairment*

Assets that have an indefinite useful life are not subject to depreciation or amortisation and are tested annually for impairment. All other assets are reviewed for impairment whenever events or changes in circumstances indicate that the carrying amount may not be recoverable. An impairment loss is recognised in the Statement of Comprehensive Income at the amount by which the asset's carrying value exceeds its recoverable amount. The recoverable amount is the higher of an asset's fair value less cost to sell and value in use. As per AASB 136 *Impairment of Assets* in respect of not-for-profit entities, value in use is the depreciated replacement cost of an asset when the future economic benefits of the asset are not primarily dependent on the asset's ability to generate net cash inflows and where the entity would, if deprived of the asset, replace its remaining future economic benefits.

*Depreciation*

The depreciable amount of plant and equipment is depreciated on a straight line basis over the useful life of the asset from the time it is held ready for use. No depreciation has been charged in respect of the heritage components of the Memorial Building in view of the high level of funds expended in the restoration and continuing maintenance of the building. It is considered that no economic benefits contained in the heritage components of the building would have been consumed in any part of the year and there is an intention to preserve heritage assets indefinitely. No depreciation has been charged in respect of the Memorial Collection due to the funds being expended on the restoration and maintenance. The depreciation rates used for each class of asset are:

Plant and Equipment 10% to 33%  
Separately depreciable components of the building 1.67% to 5%

*Land and Building*

The Land and Building asset class, including statues and bas-reliefs, is shown at fair value based on a periodic, but at least triennial, valuation by registered independent valuers. The valuation is based on the value of the land under the infrastructure and the replacement cost of the improvements. The last such valuation was on 22 November 2012.

Revaluation increments are credited directly to revaluation surplus, except that, to the extent that an increment reverses a revaluation decrement in respect of that class of assets previously recognised as an expense in the net result, the increment is recognised immediately as revenue in the net result.

Revaluation decrements are recognised immediately as expenses in the net result, except that, to the extent that a credit balance exists in the revaluation surplus in respect of the same class of assets, they are debited directly to the revaluation surplus.

As a not-for-profit entity, revaluation increments and decrements are offset against one another within a class of non-current assets, but not otherwise.

**THE TRUSTEES OF THE ANZAC MEMORIAL BUILDING**  
**NOTES TO THE FINANCIAL STATEMENTS**  
**FOR THE YEAR ENDED 30 JUNE 2013**

*Memorial Collection*

The Memorial Collection is shown at fair value based on periodic valuations by registered independent valuers.

Revaluation increments are credited directly to revaluation surplus, except that, to the extent that an increment reverses a revaluation decrement in respect of that class of assets previously recognised as an expense in the net result, the increment is recognised immediately as revenue in the net result.

Revaluation decrements are recognised immediately as expenses in the net result, except that, to the extent that a credit balance exists in the revaluation surplus in respect of the same class of assets, they are debited directly to the revaluation surplus.

As a not-for-profit entity, revaluation increments and decrements are offset against one another within a class of non-current assets, but not otherwise.

**(e) Receivables**

Short-term receivables with no stated interest rate are measured at the original invoice amount where the effect of discounting is immaterial.

**(f) Payables**

Short-term payables with no stated interest rate are measured at the original invoice amount where the effect of discounting is immaterial.

**(g) Revenue**

Revenue is recognised to the extent that it is probable that the economic benefits will flow to the entity and the revenue can be reliably measured. The following specific recognition criteria must also be met before revenue is recognised.

*Interest*

Recognised as interest accrues, taking into account the yield on the financial asset.

*State Government Subsidy and Grants*

Revenue is recognised when the subsidy or grant is received.

**(h) Goods and Services Tax**

Revenues, expenses and assets are recognised net of goods and services tax (GST), except where the GST incurred is not recoverable from the Australian Taxation Office (ATO). In these circumstances the GST is recognised as part of the cost of acquisition of the asset or as part of an item of the expense. Receivables and payables are stated with GST included.

The net amount of GST recoverable from or payable to the ATO is included as a current asset or liability in the Statement of Financial Position.

Cashflows are included in the Statement of Cash Flows on a gross basis. The GST components of cashflows arising from investing activities which are recoverable from, or payable to, the ATO are classified as operating cash flows.

**(i) New Australian Accounting Standards issued but not effective**

At reporting date a number of Australian Accounting Standards have been issued by the Australian Accounting Standards Board but are not yet effective. Those not yet effective standards have not been adopted early by the entity. The following is a list of those standards.

**THE TRUSTEES OF THE ANZAC MEMORIAL BUILDING**  
**NOTES TO THE FINANCIAL STATEMENTS**  
**FOR THE YEAR ENDED 30 JUNE 2013**

**(i) New Australian Accounting Standards issued but not effective (Continued)**

*AASB 9 Financial Instruments and AASB 2012-06 Amendments to Australian Accounting Standards arising from AASB 9.*

*AASB 13 Fair Value Measurement, AASB 2011-8 Amendments to Australian Accounting Standards arising from AASB 13 and AASB 2012-1 Amendments to Australian Accounting Standards Fair Value Measurement-Reduced Disclosure Requirements.*

*AASB 119 Employee Benefits.*

*AASB 2011-4 Amendments to Australian Accounting Standards to Remove Individual Key Management Personnel Disclosure Requirements.*

These standards will be implemented after the 2012/13 financial year and whilst the impact of these standards in the period of initial application has not been specifically quantified, they are not expected to materially impact the financial statements.

|  | <u>2013</u>    | <u>2012</u>      |
|--|----------------|------------------|
|  | \$             | \$               |
| <b>2 EXPENSES EXCLUDING LOSSES</b>   |                |                  |
| <b>(a) Employee related expenses</b>   |                |                  |
| Salaries and wages   | 620,921        | 861,332          |
|  | <u>620,921</u> | <u>861,332</u>   |
| Salaries and wages include recreation leave, superannuation and payroll tax. |                |                  |
| <b>(b) Other operating expenses</b>  |                |                  |
| Fees for services  | 97,702         | 34,486           |
| Security services  | 274,598        | 459,109          |
| Maintenance  | 56,646         | 117,732          |
| Insurance  | 76,304         | 98,690           |
| Electricity, telephone and water   | 38,441         | 43,881           |
| Cleaning   | 68,433         | 110,136          |
| Audit fees   | 53,500         | 24,000           |
| Printing and stationery  | 18,202         | 27,748           |
| Supplies and materials   | 8,105          | 26,191           |
| Volunteers program   | 5,000          | 50,000           |
| Food and catering  | 9,863          | 22,935           |
| Other  | 67,884         | 107,252          |
|  | <u>774,678</u> | <u>1,122,160</u> |
| <b>(c) Depreciation</b>  |                |                  |
| Buildings - depreciable assets   | 82,671         | -                |
| Plant and equipment  | 20,346         | 27,839           |
|  | <u>103,017</u> | <u>27,839</u>    |

**THE TRUSTEES OF THE ANZAC MEMORIAL BUILDING  
NOTES TO THE FINANCIAL STATEMENTS  
FOR THE YEAR ENDED 30 JUNE 2013**

|   | <u>2013</u>             | <u>2012</u>             |
|---|-------------------------|-------------------------|
|   | \$                      | \$                      |
| <b>3 REVENUE</b>  |                         |                         |
| <b>(a) Contributions</b>  |                         |                         |
| Contribution for prior years from NSW Department of Premier and Cabinet | 1,522,740               | 100,000                 |
| Contribution from Office of Communities                                 | <u>1,476,957</u>        | <u>1,465,000</u>        |
|   | <u><u>2,999,697</u></u> | <u><u>1,565,000</u></u> |
| <b>(b) Investment revenue</b>   |                         |                         |
| Interest revenue  | 39,975                  | 14,327                  |
|   | <u>39,975</u>           | <u>14,327</u>           |
| <b>(c) Other revenue</b>  |                         |                         |
| Other revenue   | 34,783                  | 117,392                 |
|   | <u>34,783</u>           | <u>117,392</u>          |

**4 INSURANCE OF BUILDING AND CONTENTS**

The Memorial Building and its contents are insured with the NSW Treasury Managed Fund.

**5 PROPERTY, PLANT AND EQUIPMENT**

|                          | Land and<br>Building<br>(i) | Plant and<br>Equipment | Memorial<br>Collection<br>(ii) | Total             |
|--------------------------|-----------------------------|------------------------|--------------------------------|-------------------|
|                          | \$                          | \$                     | \$                             | \$                |
| <b>At 1 July 2012</b>    |                             |                        |                                |                   |
| Gross Carrying Amount    | 29,889,409                  | 258,204                | 302,445                        | 30,450,058        |
| Accumulated Depreciation | -                           | (43,066)               | -                              | (43,066)          |
| Net Carrying Amount      | <u>29,889,409</u>           | <u>215,138</u>         | <u>302,445</u>                 | <u>30,406,992</u> |
| <b>At 30 June 2013</b>   |                             |                        |                                |                   |
| Gross Carrying Amount    | 29,980,026                  | 269,947                | 302,445                        | 30,552,418        |
| Accumulated Depreciation | (82,671)                    | (75,157)               | -                              | (157,828)         |
| Net Carrying Amount      | <u>29,897,355</u>           | <u>194,790</u>         | <u>302,445</u>                 | <u>30,394,590</u> |
|                          | Land and<br>Building<br>(i) | Plant and<br>Equipment | Memorial<br>Collection<br>(ii) | Total             |
|                          | \$                          | \$                     | \$                             | \$                |
| <b>At 1 January 2011</b> |                             |                        |                                |                   |
| Gross Carrying Amount    | 35,942,749                  | 134,447                | 248,633                        | 36,325,829        |
| Accumulated Depreciation | -                           | (26,970)               | -                              | (26,970)          |
| Net Carrying Amount      | <u>35,942,749</u>           | <u>107,477</u>         | <u>248,633</u>                 | <u>36,298,859</u> |
| <b>At 30 June 2012</b>   |                             |                        |                                |                   |
| Gross Carrying Amount    | 29,889,409                  | 258,204                | 302,445                        | 30,450,058        |
| Accumulated Depreciation | -                           | (43,066)               | -                              | (43,066)          |
| Net Carrying Amount      | <u>29,889,409</u>           | <u>215,138</u>         | <u>302,445</u>                 | <u>30,406,992</u> |



**THE TRUSTEES OF THE ANZAC MEMORIAL BUILDING**  
**NOTES TO THE FINANCIAL STATEMENTS**  
**FOR THE YEAR ENDED 30 JUNE 2013**

**5 PROPERTY, PLANT AND EQUIPMENT (Cont.)**

**(i) Anzac Memorial Land and Building Revaluation**

The building stands on land dedicated in 1931 under the Crown Lands Consolidation Act for a War Memorial. The building (including the dedicated land) was valued in November 2012 at \$29,889,409. This valuation was carried out by Scott Fullarton Valuations Pty Ltd (land and building) and McWilliam & Associates Pty Ltd (heritage items) based on the guidelines for the valuation of Land and Heritage Assets in the NSW Public Sector adopted by the NSW Treasury per policy paper *TPP 07-1: Valuation of Physical Non-Current Assets at Fair Value*. It has been based on the value of the land under the infrastructure plus the current replacement/reproduction cost of the building. The dedicated land is land contained within the footprint of the building. Land external to the building is Crown Land held in trust by the Council of the City of Sydney for public recreation. The indexation rate for the building was 1.86% as advised by Altus Page Kirkland and indexation factor for the land was 1.05% as advised by Land and Property Information for 2013. The indexation rates are considered minor and the asset values have not been altered in 2013.

**(ii) Memorial Collection Revaluation**

Memorial Collection consists of memorabilia from various theatres of conflict. The Memorial Collection was valued in June 2011 by McWilliam & Associates Pty Ltd at \$302,445.

**Reconciliation**

A reconciliation of the carrying amount of each class of property, plant and equipment at the beginning and end of the

| Year ended 30 June 2013 | Land and<br>Building | Work In<br>Progress | Plant and<br>Equipment | Memorial<br>Collection | Total             |
|-------------------------|----------------------|---------------------|------------------------|------------------------|-------------------|
|                         | \$                   | \$                  | \$                     | \$                     | \$                |
| Balance 1 Jul 2012      | 29,889,409           | -                   | 215,138                | 302,445                | 30,406,992        |
| Net Revaluation         | -                    | -                   | -                      | -                      | -                 |
| Improvements            | 90,617               | -                   | -                      | -                      | 90,617            |
| Additions               | -                    | -                   | -                      | -                      | -                 |
| Work in Progress        | -                    | -                   | -                      | -                      | -                 |
| Depreciation expense    | (82,671)             | -                   | (20,348)               | -                      | (103,019)         |
| Balance 30 June 2013    | <u>29,897,355</u>    | <u>-</u>            | <u>194,790</u>         | <u>302,445</u>         | <u>30,394,590</u> |

**Reconciliation**

A reconciliation of the carrying amount of each class of property, plant and equipment at the beginning and end of the

| Eighteen months ended 30 June 2012 | Land and<br>Building | Work In<br>Progress | Plant and<br>Equipment | Memorial<br>Collection | Total             |
|------------------------------------|----------------------|---------------------|------------------------|------------------------|-------------------|
|                                    | \$                   | \$                  | \$                     | \$                     | \$                |
| Balance 1 Jan 2011                 | 35,902,049           | 40,700              | 107,477                | 248,633                | 36,298,859        |
| Net Revaluation                    | (6,604,515)          | -                   | -                      | 53,812                 | (6,550,703)       |
| Improvements                       | 591,875              | -                   | -                      | -                      | 591,875           |
| Additions                          | -                    | -                   | 135,500                | -                      | 135,500           |
| Work in Progress                   | -                    | (40,700)            | -                      | -                      | (40,700)          |
| Depreciation expense               | -                    | -                   | (27,839)               | -                      | (27,839)          |
| Balance 30 June 2012               | <u>29,889,409</u>    | <u>-</u>            | <u>215,138</u>         | <u>302,445</u>         | <u>30,406,992</u> |

**THE TRUSTEES OF THE ANZAC MEMORIAL BUILDING**  
**NOTES TO THE FINANCIAL STATEMENTS**  
**FOR THE YEAR ENDED 30 JUNE 2013**

**6 RECEIVABLES & INVENTORIES**

|                      | <u>2013</u>    | <u>2012</u>    |
|----------------------|----------------|----------------|
|                      | \$             | \$             |
| GST Receivable       | 83,191         | 48,666         |
| Receivable - General | 27,777         | -              |
| Inventories          | 1,887          | -              |
| Prepayments          | -              | 82,093         |
|                      | <u>112,855</u> | <u>130,759</u> |

**7 PAYABLES**

|                  |                  |                  |
|------------------|------------------|------------------|
| Accrued expenses | 125,071          | 360,306          |
| Accrued salaries | 12,472           | 81,059           |
| Other            | 878,367          | 1,366,720        |
|                  | <u>1,015,910</u> | <u>1,808,085</u> |

Other payables \$878,367 relate to the expenses incurred during the period May 2012 to June 2013 by Office of Communities and owed by the Trust.

**8 PROVISIONS**

|                    |               |               |
|--------------------|---------------|---------------|
| Annual leave       | 68,497        | 59,997        |
| Long service leave | -             | 9,898         |
|                    | <u>68,497</u> | <u>69,895</u> |

**9 ASSISTANCE PROVIDED BY OTHER PARTIES**

- a Material assistance at no cost was provided by the Government Architect (Department of Finance and Services) as Honorary Architect at \$43,077 (\$74,940 in 2012).
- b Honorary secretarial and other services provided by the Director and other staff of Veteran Affairs (a unit of Office of Communities) was \$97,594 (\$142,820 in 2012).
- c Office of Communities provided inkind administrative services to the Entity during the year.
- d Office of Communities provided assistance with 2012 audit fees of \$57,500 during the year.

**THE TRUSTEES OF THE ANZAC MEMORIAL BUILDING  
NOTES TO THE FINANCIAL STATEMENTS  
FOR THE YEAR ENDED 30 JUNE 2013**

**10 NOTES TO THE STATEMENT OF CASH FLOWS**

(a) Cash and Cash Equivalents

Cash and Cash Equivalents included in the Statement of Cash Flows and the Statement of Financial Position comprise the following amounts.

|                          | <u>2013</u>      | <u>2012</u>    |
|--------------------------|------------------|----------------|
|                          | \$               | \$             |
| Cash at Bank and on Hand | <u>1,693,846</u> | <u>881,274</u> |
|                          | <u>1,693,846</u> | <u>881,274</u> |

The higher cash balance at 30 June 2013 is due to the entity's payments being made by Office of Communities during the period May 2012 to June 2013 in addition to the annual contributions. The entity is required to reimburse Office of Communities in 2013-14. (Refer Note 7).

(b) Reconciliation of Cash Flows from Operating Activities to Net Result

|   |                         |                         |
|---|-------------------------|-------------------------|
| Net cash Provided by Operating Activities                                 | 903,189                 | 750,032                 |
| Depreciation  | (103,017)               | (27,839)                |
| Acceptance by the Crown Entity of employee benefits and other liabilities | (1,924)                 | (1,478)                 |
| Increase/(decrease) in receivables  | (17,904)                | 71,852                  |
| Decrease/(increase) in Payables   | 794,097                 | (1,168,417)             |
| Decrease/(increase) in Provisions   | 1,398                   | (13,762)                |
| Assets recognised for the first time                                      | -                       | 75,000                  |
| <b>Net result</b>   | <u><u>1,575,839</u></u> | <u><u>(314,612)</u></u> |

**THE TRUSTEES OF THE ANZAC MEMORIAL BUILDING**  
**NOTES TO THE FINANCIAL STATEMENTS**  
**FOR THE YEAR ENDED 30 JUNE 2013**

**11 FINANCIAL INSTRUMENTS**

For the purposes of these financial statements, a financial instrument is any contract that gives rise to both a financial asset of one entity and a financial liability or equity instrument of another entity. For the Trust, financial assets include cash at bank and receivables. The financial liabilities are limited to accounts payable.

(i) *Credit Risk*

The maximum exposure to credit risk, excluding the value of any collateral or other security, at balance date to recognised financial assets is the carrying amount of those assets, net of any provision for doubtful debts, as disclosed in the statement of financial position and notes to the financial statements. The Trust does not have any material credit risk exposure to any single debtor or group of debtors.

(ii) *Liquidity Risk*

Liquidity risk is the risk that the Trust will be unable to meet its payment obligations when they fall due. The Trust continuously manages risk through monitoring future cash flows and maturities planning to ensure adequate holding of high quality liquid assets. The Trust manages liquidity risk by monitoring cash flows.

The table below details the maturity analysis for financial instruments.

*Financial Liability and Financial Asset Maturity Analysis*

|   | Within 1 Year  |                  | 1 to 5 Years |      | Over 5 Years |      | Total          |                  |
|---|----------------|------------------|--------------|------|--------------|------|----------------|------------------|
|   | 2013           | 2012             | 2013         | 2012 | 2013         | 2012 | 2013           | 2012             |
|   | \$             | \$               | \$           | \$   | \$           | \$   | \$             | \$               |
| <b>Financial Liabilities due for payment</b>    |                |                  |              |      |              |      |                |                  |
| Payables *                                      | 1,015,910      | 1,808,085        | -            | -    | -            | -    | 1,015,910      | 1,808,085        |
| <b>Financial Assets — cash flows realisable</b> |                |                  |              |      |              |      |                |                  |
| Cash and cash equivalents                       | 1,693,846      | 881,274          | -            | -    | -            | -    | 1,693,846      | 881,274          |
| Receivables *                                   | 27,777         | -                | -            | -    | -            | -    | 27,777         | -                |
| Net (outflow)/inflow on financial instruments   | <b>705,713</b> | <b>(926,811)</b> | -            | -    | -            | -    | <b>705,713</b> | <b>(926,811)</b> |

\* Note: The above table may not reconcile to the Statement of Financial Position as statutory receivables, prepayments & payables have been excluded.

(iii) *Market Risk*

Market risk is the risk that the fair value of future cash flows of a financial instrument will fluctuate because of changes in market prices. The Trusts exposure to market risk is primarily through interest rate risk on cash holdings. The Trust has no exposure to foreign currency risk and does not enter into commodity contracts.

**THE TRUSTEES OF THE ANZAC MEMORIAL BUILDING  
NOTES TO THE FINANCIAL STATEMENTS  
FOR THE YEAR ENDED 30 JUNE 2013**

**11 FINANCIAL INSTRUMENTS (Cont.)**

**Interest rate risk**

Exposure to interest rate risk arises primarily through the Trust's cash assets. A reasonable change of +/-1% is consistent with trends in interest rates. The Trust's exposure to interest rate risk is set out below.

|                                | Carrying<br>Amount<br>\$ | -1%<br>Profit<br>\$ | -1%<br>Equity<br>\$ | +1%<br>Profit<br>\$ | +1%<br>Equity<br>\$ |
|--------------------------------|--------------------------|---------------------|---------------------|---------------------|---------------------|
| <b>2013 - Financial assets</b> |                          |                     |                     |                     |                     |
| Cash and cash equivalents      | 1,692,528                | (16,925)            | -                   | 16,925              | -                   |
| <b>2012 - Financial assets</b> |                          |                     |                     |                     |                     |
| Cash and cash equivalents      | 881,274                  | (8,813)             | -                   | 8,813               | -                   |

**12 ADDITIONAL INFORMATION**

- (i) There are no contingent liabilities at period end.
- (ii) At period end there were no significant capital or operating lease commitments (Nil in 2012).
- (iii) No adverse events have occurred after the reporting period which would have a material impact on the financial statements.
- (iv) There are no loans or advances due to the Trust by officers or employees.
- (v) There are no amounts due by way of loan or otherwise to the Trust by a corporation, a director of which is an officer or employee of the Trust.

**END OF AUDITED FINANCIAL STATEMENTS**