



ANZAC MEMORIAL
HYDE PARK SYDNEY

ANNUAL REPORT 2010





ANZAC MEMORIAL
HYDE PARK SYDNEY

Contents

Letter from the Trustees

Report of the Trustees of the ANZAC Memorial Building

Mission

Historical Background

- The Building of the Memorial
- Description of the Memorial
- Rededication of the Memorial

Access

Governance

The Trustees Legislative Charter

Who are the Trustees?

Achievements

Building Improvement and Maintenance Plan

General Maintenance Work

Capital Works Program of repairs and improvements

Future development – Education Centre Concept

Financial Performance

Process Improvements

Public Program Highlights

Staffing

Organisational Chart

Establishment

ANZAC Memorial Staff

EEO requirements exemption

General Disclosures

Accounts payable

Publications

Ethnic Affairs Policy Statement

Consultants

Insurances

Occupational Health and Safety

Risk Management

Heritage Management

Consumer Response

Audit Report

Financial Statements

Report of the Trustees of the ANZAC Memorial Building for the year ended 31 December 2010

This is the twenty-seventh Report of the Trustees of the ANZAC Memorial Building since enactment of the Annual Reports (Statutory Bodies) Act and covers the period 1 January 2010 to 31 December 2010.

The Trustees' Mission for the Memorial is:

1. To maintain and conserve the ANZAC Memorial as the principal State War Memorial in New South Wales.
2. To preserve the memory of those who have served our country in war by:
 - collecting, preserving, displaying and researching military historical material and information relating to New South Wales citizens who served their country in war or in peace-keeping activities
 - educating members of the public in the history of the Memorial and Australian military service through tours and displays.

Historical Background

The ANZAC Memorial Building in Hyde Park South is the principal State War Memorial to all Australians who serve their country in war. The building, completed in 1934, is a concrete structure, clad in stone, designed by C. Bruce Dellit, with sculptures by Rayner Hoff. The Memorial is administered by a board of trustees appointed under the ANZAC Memorial (Building) Act 1923 No 27, as amended.

The Building of the Memorial

On 25th of April 1916, the first anniversary of the landing of the Australian Imperial Forces at Anzac Cove, a fund was opened to raise money to erect a permanent Memorial in Sydney. By the end of the war the fund had reached £60,000. There was, however, disagreement about the form and the location of the proposed Memorial.

During 1923, the ANZAC Memorial (Building) Act was passed and the decision was taken to erect the Memorial in Hyde Park. However, there was no further action until after the Cenotaph had been erected in Martin Place in 1927.

Parliament sanctioned the erection of the Memorial on its present site in 1929. A competition was held for the design of the Memorial and 117 entries were received from all over the world. On 9 July 1930 first prize was awarded to Bruce Dellit and tenders were called in November 1931. Kell and Rigby Pty Ltd were the successful building contractors.

The foundation stones were laid on 19 July 1932. The building was completed in 1934. Elements of the original design had to be deleted because of their cost, but the Pool of Reflection was built when the Council of the City of Sydney was granted unemployment relief funds for cost assistance

purpose. The Memorial was officially opened by Prince Henry, Duke of Gloucester, on 24 November 1934.

Description of the Memorial

The Memorial is located on the central north-south axis of Hyde Park South. The Memorial building is raised on a square podium which houses offices for returned service organisations. On the podium is the main circular domed hall which is approached by wide ceremonial stairs from the north and south. Entrances to the lower level are from the east and the west.

The concrete structure is clad in red granite from the Bathurst District. The building has a stepped geometric form which is typical of the Art Deco style. The stone cladding is unadorned. Sculpture is the decorative and symbolic element of the exterior. On each face of the building is a large window with a semicircular head, glazed in amber cathedral glass.

Large buttresses are surmounted by monumental seated figures which are cast in artificial stone. Each figure is a unit of the Australian Imperial Forces. On each corner is a standing figure representing the Army, Navy, Air Force and the Army Medical Corps. Bas-relief panels on the eastern side illustrate the Eastern Campaigns and on the west, the activities of the Australian Imperial Force (AIF) on the Western Front.

The main interior space is the circular Hall of Memory, entered from the north and south approaches. Within it, the Well of Contemplation allows visitors to look down into the Hall of Silence. The sculpture 'Sacrifice', is the central motif of the Memorial's design. Symbolising the spirit of courage, endurance and sacrifice, it depicts a body of a young Anzac soldier lying over a shield and sword. He is supported by three female figures and an infant, representing 'his best beloved' – mother, sister, wife and child. The infant also represents future generations. The 'Sacrifice' group is centered in a bronze ring, signaling the flames of destruction. The design of the space means that visitors in the Hall of Memory automatically bow their heads to view the 'Sacrifice' monument.

The walls of the Hall of Silence are clad in white New South Wales marble inscribed with the names of those areas where AIF operated and it is surrounded at the upper level by a wreath-like carved marble balustrade.

The walls of the Hall of Memory are also clad in white marble and lit by the amber glass of the main windows which are etched with the rising sun insignia of the AIF and the winged torch of liberty. The dome over the Hall is decorated with 120,000 stars representing each man and woman from New South Wales who served overseas in the 1914-1918 War.

Around the walls of the Hall of Memory are four niches, each representing a major theatre of war. On the walls of each niche are inscribed the names of principal battle areas and on the floors are stones from Flanders, Gallipoli, Palestine and New Guinea set in the rising sun motif.

Higher on the walls of the Hall of Memory are panels depicting the four branches of Australian Service.

On the east side of the space is the former archives room, which now displays the Flame of Remembrance. Its sculpted doorway symbolizes the flaming Sword of Sacrifice and the Rising Sun borne on the Wings of Time. On the western side are marble stairs leading down to the Hall of Silence.

Two external etched glass, vertical lift security screens, within the north and south stairs of the podium area of the Memorial, were completed in March 2000. The screens remain in a lowered position during the day, providing no visible alteration to the form of the Memorial. Designed as a deterrent to trespassers, the screens are also intended to make a positive contribution to the public realm through the incorporation of artwork. The artwork on the glass panels is made visible at night using fibre optic lighting recessed within the frame. Soldier-like figures in the landscape are interspersed with a poppy image in the artwork. The image of the poppy is used as a token of remembrance to the fallen.

An important component of the original design was the inclusion of offices for returned service associations within the ground floor of the Memorial. Originally, these spaces were occupied by the Returned Soldiers and Sailors Imperial League (later the Returned and Services League), TB Soldiers' Association and the Limbless Soldiers' Association, with the first two organisations still using spaces within the Memorial. The former RSL offices in the southern half of the ground floor of the Memorial have been used as an exhibition area since 1984, with a major redesign of the exhibition completed in late 2009. Associated with the exhibition, the restored Assembly Hall is used for the regular presentation of a short film about the Memorial, as well as being used for lectures and special events.

Rededication of the Memorial in 1984

In the year of the Memorial's fiftieth anniversary, the Trustees successfully proposed an amendment to the ANZAC Memorial (Building) Act to rededicate the Memorial to all Australians who served their country in war.

This occurred on 30 November 1984, with the Governor of New South Wales, His Excellency Sir James Anthony Rowland, AC, KBE, DFC, AFC, unveiling a commemorative plaque.

Access

Public access to the ANZAC Memorial extends from 9 am to 5 pm seven days per week. The Memorial is closed on Christmas Day and Good Friday. There is a formal Remembrance Service of around five minutes duration, conducted daily at 11 am.

Disability access is by the western centre door on the ground level. Another access option is at the eastern glass door in the Assembly Hall area, if required. There is also lift access from the ground floor (key operated by staff only) to the Hall of Memory and to the disabled toilet in the basement as required.

Memorial staff may be contacted:

Telephone (02) 9267 7668

Facsimile (02) 9264 2039

Email manager@anzacmemorial.nsw.gov.au

Webpage www.anzacmemorial.nsw.gov.au/home

Governance

The Trustees' Legislative Charter

The ANZAC Memorial (Building) Act 1923 charges the Trustees with responsibility for the completion, management, maintenance and preservation of the ANZAC Memorial Building, as the principal State War Memorial and for the care, management, maintenance and improvement of the site it occupies.

On 23 April 2010, the former Premier announced legislative reforms to the *Act* to give the Trustees an increased capacity to ensure that the commemorative integrity of the Memorial is maintained. The reforms were also directed at developing and enhancing the Memorial's educational, curatorial and volunteer capacity. These reforms to facilitate greater accountability and a strategically focussed Trust with effective connections to the centre of Government, cultural and educational institutions, were proclaimed on 15 November 2010. The Premier is Chair of the new Trustees and the RSL President is Deputy Chair.

The general control and management of the use of the ANZAC Memorial and its site is also the responsibility of the Trustees. At a meeting held on 22 November 2010, the new Trustees passed a resolution in accordance with section 9A of the *Act* delegating the management of the day to day administration, control and responsibility of the Memorial to the Director of the Office for Veterans' Affairs in the Department of Premier and Cabinet. At this inaugural meeting the Director was also appointed Honorary Secretary to the Trust.

The Returned and Services League of Australia (New South Wales Branch) pursuant to section 5 (1) of the *Returned and Services League of Australia (New South Wales) Incorporation Act 1935* has taken up the significant role of Guardian to the Memorial, working to ensure that future generations continue to remember the military sacrifices of Australia's past.

At the same meeting, the Trustees were advised that Mr Christopher Perrin, State Secretary of the League had been nominated by the League as the custodian of the ANZAC Memorial Building.

Who are the Trustees?

The ANZAC Memorial (Building) Act No. 27, 1923, as amended by ANZAC Memorial (Building) Amendment Act 2010, appoints the holders of the following offices as Trustees of the ANZAC Memorial Building:

1. The Premier of the State.
2. The Leader of the Opposition.
3. The Lord Mayor of Sydney.
4. The President of the Returned and Services League of Australia (New South Wales Branch).
5. The Director General of the Department of Education and Communities
6. The NSW Government Architect
7. The State Librarian
8. The President of the TB Sailors, Soldiers and Airmen's Association of NSW (Inc).
9. The Community representative (vacant)

Section 3 of the Act provides for Trustees to appoint proxies to attend and vote at meetings of the Trustees. The Premier's proxy can also function as Chair.

As of 31 December 2010 the Trustees and their proxies were:

Premier, The Hon Kristina Keneally MP (Proxy The Hon Frank Terenzini MP)

President of the NSW Branch RSL, Mr Don Rowe OAM (Proxy Mr John Haines AM)

Leader of the Opposition, Mr Barry O'Farrell MP (Proxy Mr Victor Dominello MP)

Lord Mayor, Ms Clover Moore MP (Proxy Councillor Phillip Black)

Director General of Education, Mr Michael Coutts-Trotter (Proxy Mr Greg Prior)

Mr Peter Mould, NSW Government Architect (Proxy Mr Bruce Pettman)

Mr Paul Brunton representing the State Librarian (vacant position)

Mr Stan Poulsen President T.B. Sailors, Soldiers and Airmen's Association of NSW

Achievements for 2010

Capital Works Program (CWP), Building Improvement and Maintenance

With the majority of the Capital Works Program-related works completed during 2009 prior to the 75th anniversary of the Memorial, there was limited building improvement and maintenance works carried out during 2010. Most of the works that occurred during 2010 were related to rectification of contractor defects associated with the Capital Works Program (CWP), as well as resolving ongoing maintenance and waterproofing issues.

Major items of note during 2010 include:

- Completion of the 12 months defects period of the major works up to November 2010 (resulting in a review of any other outstanding or appropriate works requirements for the building)
- Establishment/re-establishing maintenance programs for new and existing equipment for the building.

Some items from the CWP were deferred until final reconciliation of the CWP funding expenditures, including the provision of a new external lighting scheme for the facades of the building.

Future Development - Education Centre Concept

In March 2007 the Honorary Architect & the Government Architect's Office were commissioned to prepare a concept plan and feasibility submission for the potential development of an Education/Interpretation Centre at the ANZAC Memorial. The concept included permanent and traveling exhibition spaces, education and research facilities, administrative and staff facilities, located underground, adjacent to the Memorial.

In 2010, no further work to the concept was undertaken due to imminent changes in management and control of the Memorial.

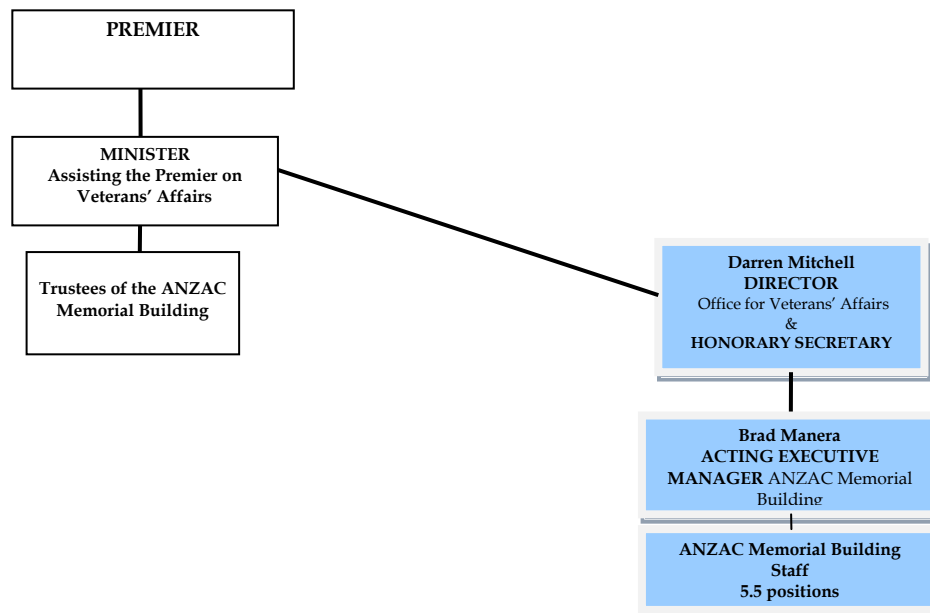
Public Program Highlights

1. A wreath laying ceremony was undertaken on Australia Day by staff of the Memorial. In conjunction with this event, a Military Vehicle Exhibition Display was organised outside the Memorial Building perimeter.
2. The book launch, 'Diggers and Greeks' by Dr Maria Hill was held in the Assembly Hall of the Memorial on the 6 April. A wide range of the community attended this event.
3. On 22 April, the RSL and Schools Remember Anzac Service was well attended with the contribution of 88 schools. This ceremony is becoming increasingly popular with young people.
4. On 25 April, Anzac Day Commemorative Service attended by Veterans, Serving Military Personnel, Dignitaries and members of the public.
5. Indigenous Veterans Day ceremony, 28 May, was warmly embraced by those in attendance. This was the fourth occasion such a service has been held at the Memorial.
6. The Boer War Commemorative Service was held on the 30 May. The service commemorated the 108th Anniversary of the cessation of this conflict in South Africa. It was the first time the Boer War had formally been commemorated at the ANZAC Memorial.
7. The Bomber Command Association Memorial Service, was conducted on the 6 June for Second World War Aircrew.
8. The Italian National Day Service and wreath laying ceremony was conducted on 6 June.
9. The Battle of Fromelles, France (94th Anniversary), WW1 Annual Commemoration ceremony, 19 July. Numbers were down slightly due to members of FFAIF membership attending the ceremony in France.
10. Australian Army Training Team Vietnam (AATTV) Annual wreath laying ceremony, 24 July.
11. Remembrance Day, 11 November. Hall of Memory was opened to the public for the 11am service, and was well attended.
12. Wreath laying ceremony by the Belgium Ambassador, 5 October. This included a tour of the exhibition area.
13. The War Widows Guild held a National Wreath Laying Service on the 19 October. This was a moving ceremony well attended by Widows and members of the public.
14. Formal Wreath Laying Ceremony and tour, 16 November, by Army Cadets and Instructors (208 ACU) from Port Macquarie.
15. Presentation on the 20 December by Johan Vandewalle and guests, on finding of Australian War Graves in the Ypres Salient. This also involved a wreath laying ceremony.
16. Stars of Memory: an innovation started in 2009 (for the 75th Anniversary of the ANZAC Memorial) allowing members of the public to make a personal tribute to those who have served. This program has now become an ongoing venture due to public interest and

demand. The ashes of the cremated stars were scattered on Australian Battlefields in Korea and the Western Front by the Premiers ANZAC Memorial Scholars.

Staffing

Organisational Chart - Veterans' Affairs



Establishment

The Returned Services League of Australia (New South Wales Branch) have since 2005, and including 2010, employed personnel as follows:

	2010	2009	2008	2007	2006
Executive Manager *	1	-	-	-	-
Memorial Manager	1	1	1	1	1

Deputy Manager	1	1	1	1	1
Memorial Support Officers (full-time)	3	3	3	2	2
Memorial Support Officers (casual)	1	-	1	1	1

*(Appointed by DPC)

ANZAC Memorial Staff 2010

- Brad Manera, Acting Executive Manager
- Greg Read, SC, Manager
- Anthony Clancy, Deputy Manager
- Michael Wilson, Memorial Support Officer
- Patrick Holmes, Memorial Support Officer
- Dr Anthony Scott, Memorial Support Officer
- James Michel, Memorial Support Officer (casual)
- David Evans, Memorial Support Officer (casual)

Staff Training

In 2010 there was a continuation of staff developing skills in assisting the public with researching their families’ military history.

The Memorial enhanced staff professional knowledge through attendance at a range of technical seminars and conferences.

Equal Employment Opportunity (EEO) requirements exemption

The New South Wales Treasurer exempted the Trustees from disclosing equal employment opportunity information because the small numbers employed by the Trustees would render meaningless any statistics presented.

Publications

Available free of charge to the public from the ANZAC Memorial Building are:

- copies of Annual Reports dating from 1985;
- an information brochure; and
- Standard Operating Procedures are gazetted as appropriate.

The cost of printing the 2010 Annual Report will be \$399.00. Fifty copies will be made at \$7.98 per copy.

Ethnic Affairs Policy Statement

The Trustees are aware of the principles of cultural diversity and apply them as appropriate. Ethnic communities may apply to the Trustees for approval to use the Memorial for purposes consistent with the provisions of the *ANZAC Memorial (Building) Act*.

Consultants

No consultants were engaged during 2010.

Insurances

Since 1 July 1993, the Treasury Managed Fund provided unlimited insurance cover for the Memorial and its Trustees in the fields of Property, Public Liability and other Miscellaneous insurance. Under the terms of cover, the Trustees are required to absorb property losses of less than \$300. There were three claims in this category.

Occupational Health and Safety (OH&S)

Health and safety issues are continually monitored by the Trustees through the Memorial Management and staff consultation.

There were three reported accidents in 2010. There was one accident involving a workers compensation claim. In 2009 there were two reported accidents and no compensation claims.

Staff attained First Aid Certificate training in HLTCPR201A Perform CPR, and 21658VIC Course in automated external defibrillation.

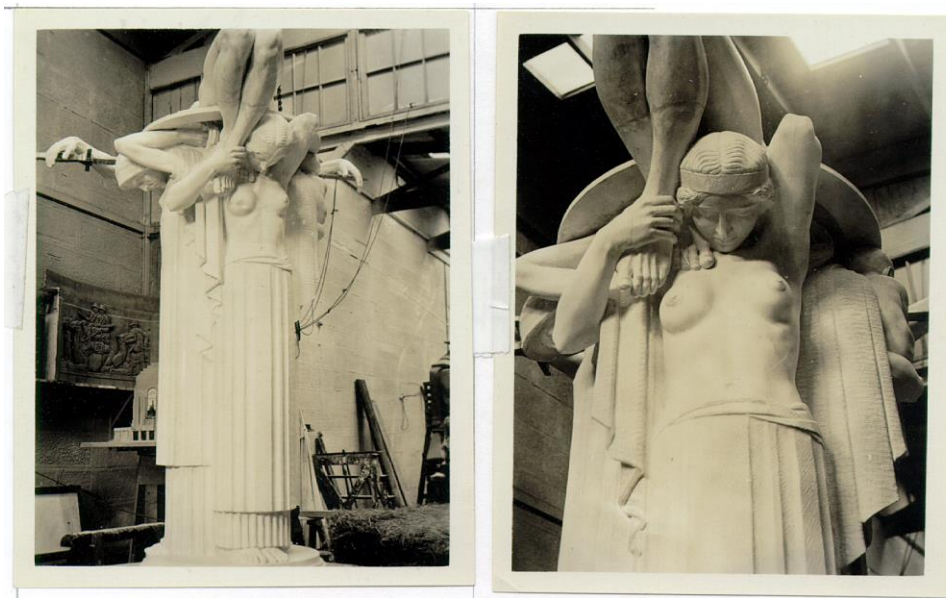
Heritage Management

The ANZAC Memorial was included on the State Heritage Register (SHR) on 23 April 2010 (listing # 01822) as recognition of its heritage significance to the state of NSW. Inclusion on the SHR is an indication that the Memorial is of particular importance to the people of NSW, enriches our understanding of our history and identity, is legally protected as a heritage item under the NSW Heritage Act, and requires approval from the Heritage Council of NSW for major changes. (Further information on the SHR generally is available at: http://www.heritage.nsw.gov.au/07_subnav_04b.htm).

The statement of significance included in the SHR listing provides a summary of the identified heritage significance of the Memorial, as follows:

The ANZAC Memorial is of historical significance to the State for its embodiment of the collective grief of the people of NSW at the loss of Australian servicemen and women since World War I. It is associated with the landing of Australian troops at Gallipoli on 25 April 1915, since fundraising for the memorial was established on the first anniversary of the landing. It is also associated with returned servicemen and their organisations including the RSL, which lobbied for the erection of the monument and occupied offices within it. The ANZAC Memorial is of State aesthetic significance as a great work of public art which is arguably the finest expression of Art Deco monumentality in Australia. The result of an outstanding creative collaboration between architect Bruce Dellit and sculptor Rayner Hoff, it contains complex symbolic embellishments that reinforce and enhance the commemorative meanings of the building. Its landscape context in Hyde Park was purposefully designed for it by Dellit including the large Pool of Reflection lined by poplars. Its positioning on a major axis linked to the Archibald Fountain contributes significantly to the physical character of Hyde

Park and the city of Sydney. The ANZAC Memorial is of State significance as the largest and most ambitious of the numerous war memorials constructed throughout NSW after the Great War. The memorial is also representative as NSW's contribution to the group of 'national war memorials', whereby each state capital city developed its own major war memorial in the inter-war period. In this group the ANZAC Memorial is outstanding in its size, integrity and aesthetic appeal.



The Memorial is also identified as a heritage item in the *Sydney Local Environmental Plan 2005* (No 185 CSHI No 8024 in Schedule 8 Central Sydney heritage items, Part1 Heritage items).

In accordance with the *NSW Heritage Act 1977* and the *State Agency Heritage Guide 2005*, the Trustees of the ANZAC Memorial report that during 2010 they finalised a wide program of capital works (that was mostly completed during 2009), and carried out additional maintenance and repairs as required, to maintain the condition of the ANZAC Memorial to reflect its state heritage significance. These works are detailed elsewhere in this report.

Consumer Response

As a service-based organization, customer feedback is of prime importance to the ANZAC Memorial and is closely and regularly monitored. With this in mind, the Memorial keeps a pro-forma 'Feedback Form' for this specific purpose to record any compliments or complaints. In addition, a general file is also maintained for oral compliments as well as complaints. In particular, major complaints are dealt with in writing through the Honorary Secretary on behalf of the Trustees.