

ANZAC MEMORIAL

HYDE PARK SYDNEY

VISUAL STORY

I am visiting the Anzac Memorial. Here are some things I might want to know to make my visit easier for me.

Open daily from 9am to 5pm





NO FOOD, DRINK,
SMOKING, PETS OR LOUD NOISES
IN THE MEMORIAL VICINITY, THANK YOU

Signs at the Memorial will tell me that these are some of the rules I must follow.

Whilst pets are not allowed at the Memorial, I can bring my assistance animal if I require one.

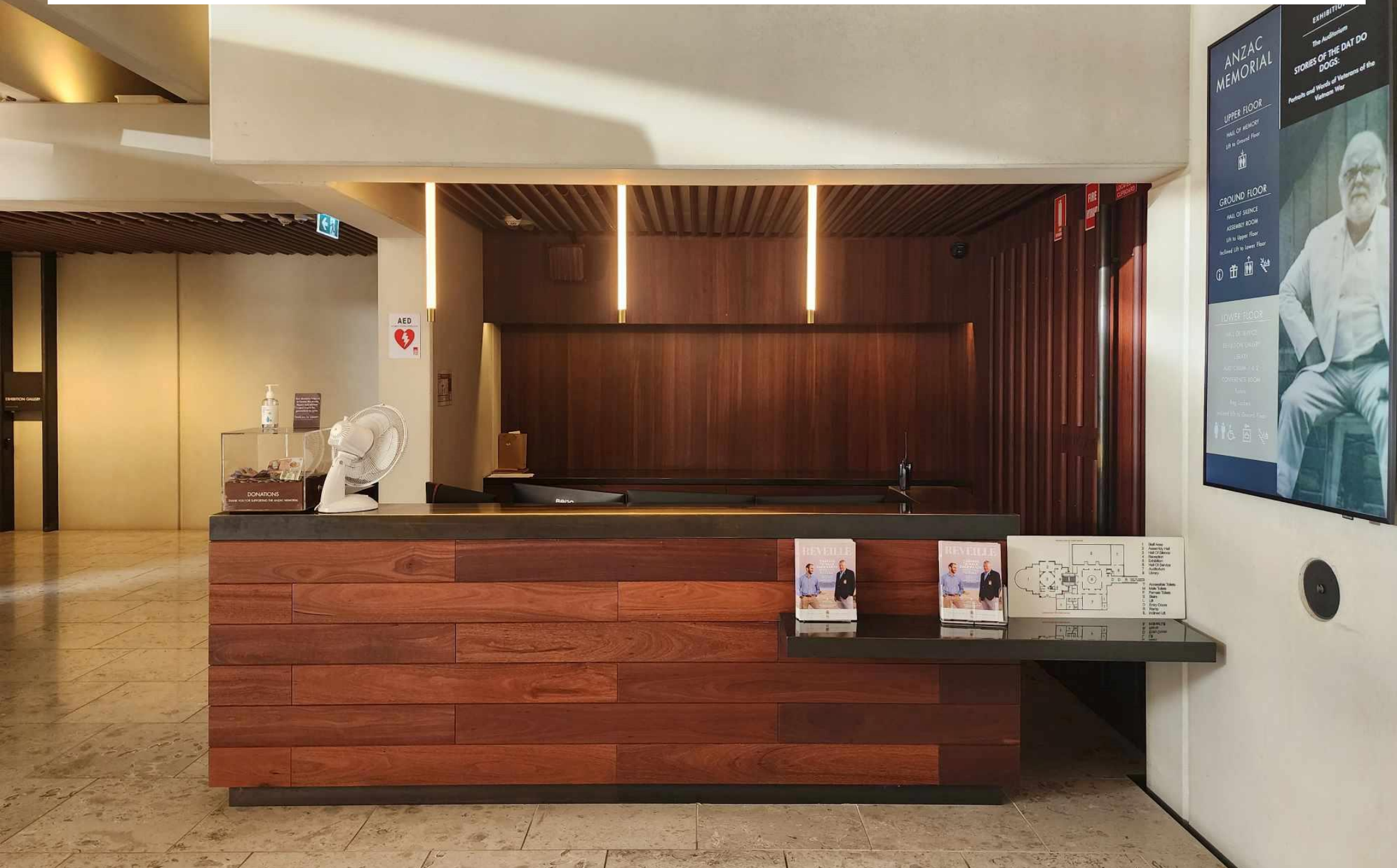


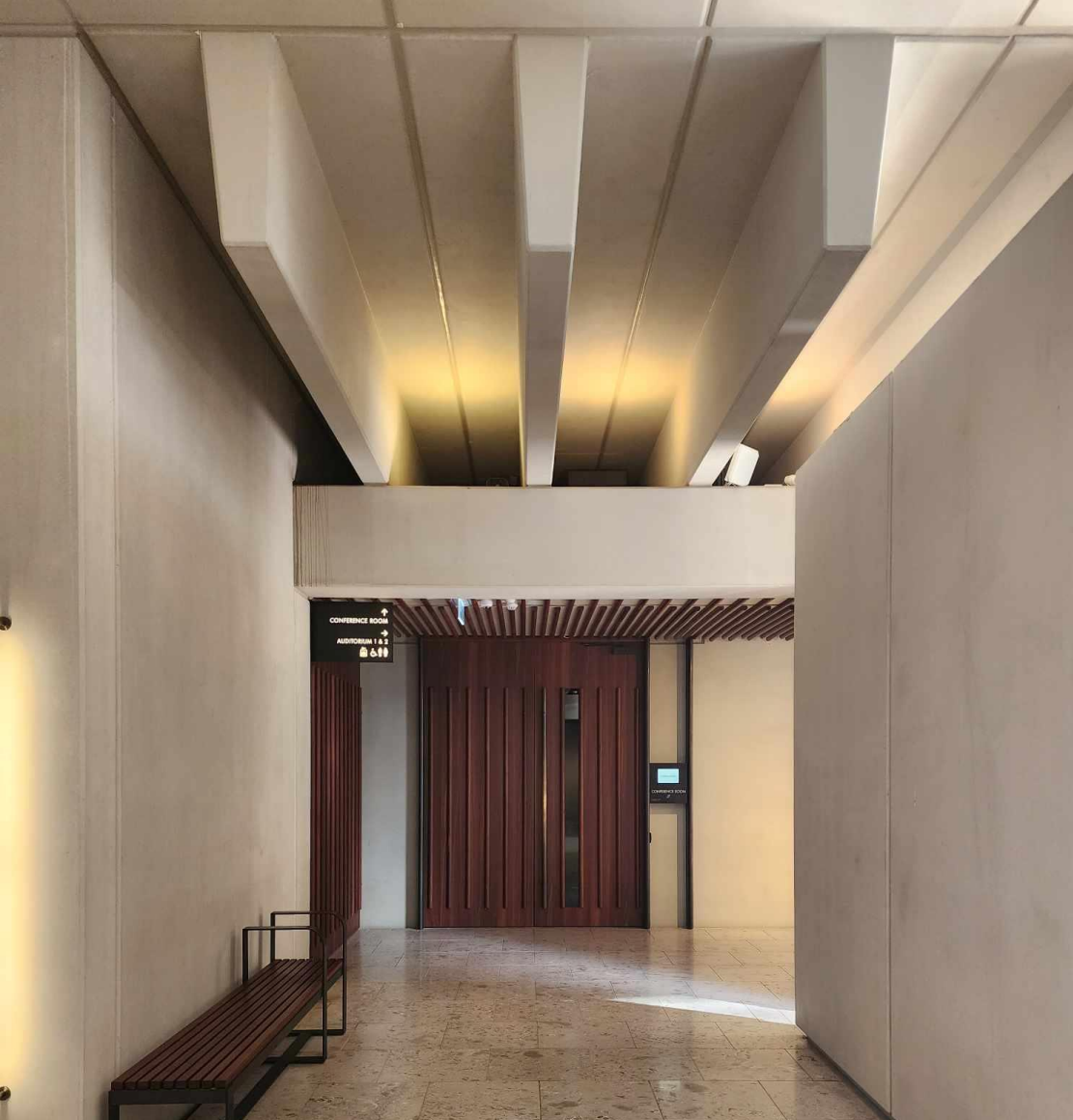
The best place for me to enter the Memorial is through the Liverpool Street entrance, down the walkway that runs down the middle of the cascade water feature. From here I will be able to see glass doors. I will hear road noise, people in the park and the water from the fountain. This noise will get quieter as I move further down the walkway.



After I walk through the glass doors, I will see an entrance that has a circular opening in the ceiling called the Oculus. There is also a circle on the ground. I might find the light from the Oculus to be bright.

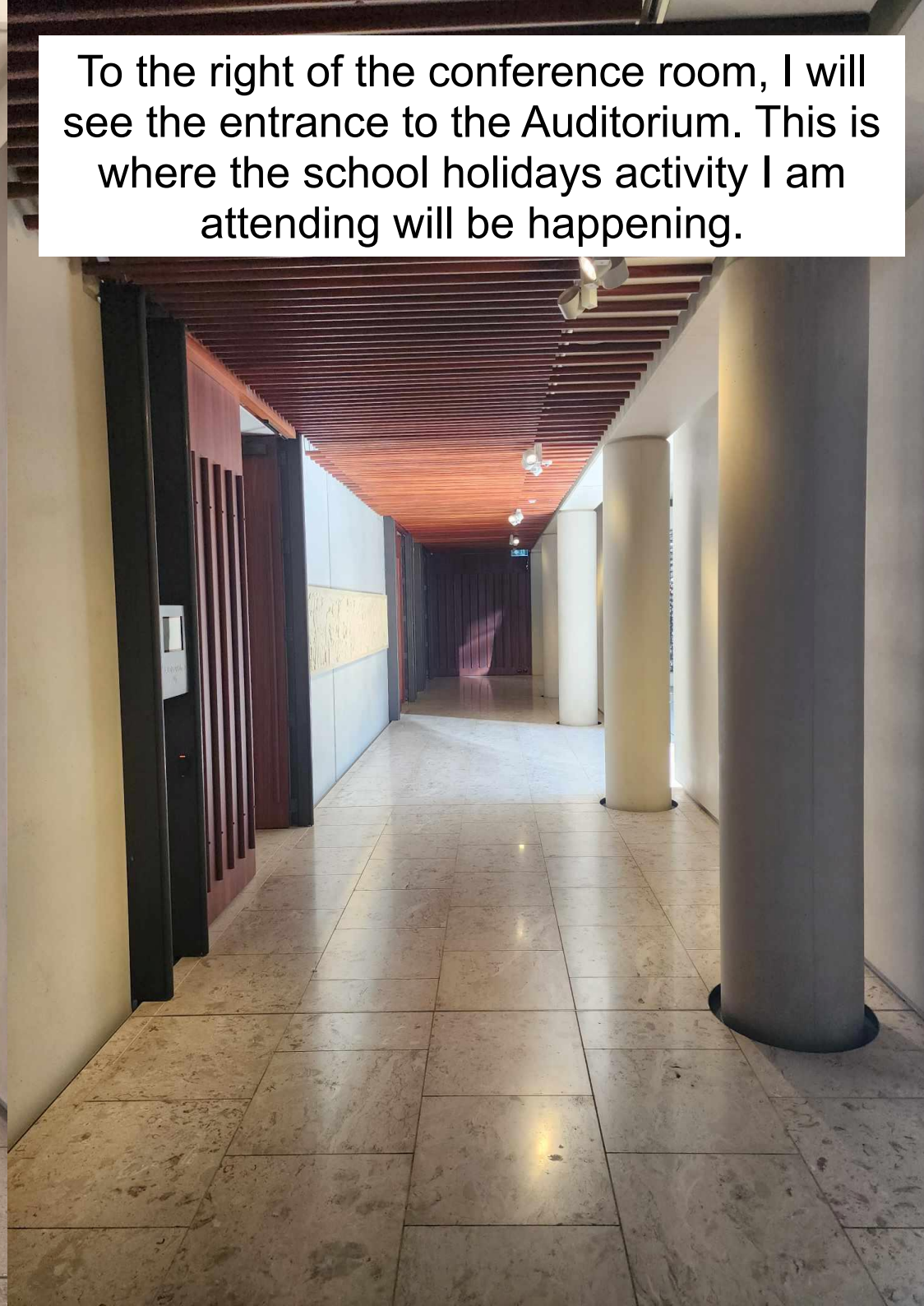
On my right I will see the security reception desk. I can go here if I need any help or assistance throughout my visit.





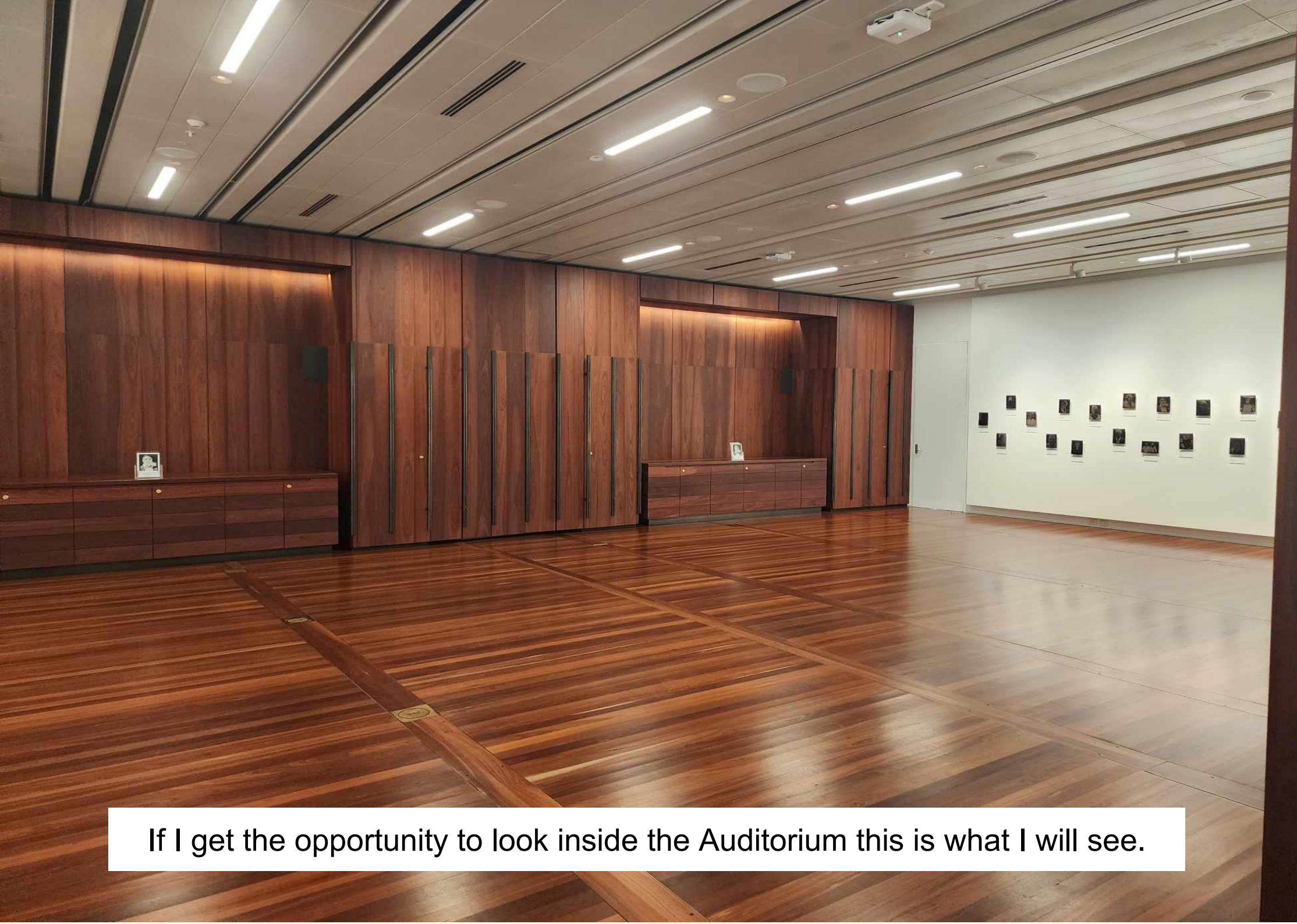
On my left I will see a door. It will say “Conference Room” on the sign outside. On the day of the program I am attending, the conference room will be a quiet room, which I can use if I need to.

To the right of the conference room, I will see the entrance to the Auditorium. This is where the school holidays activity I am attending will be happening.

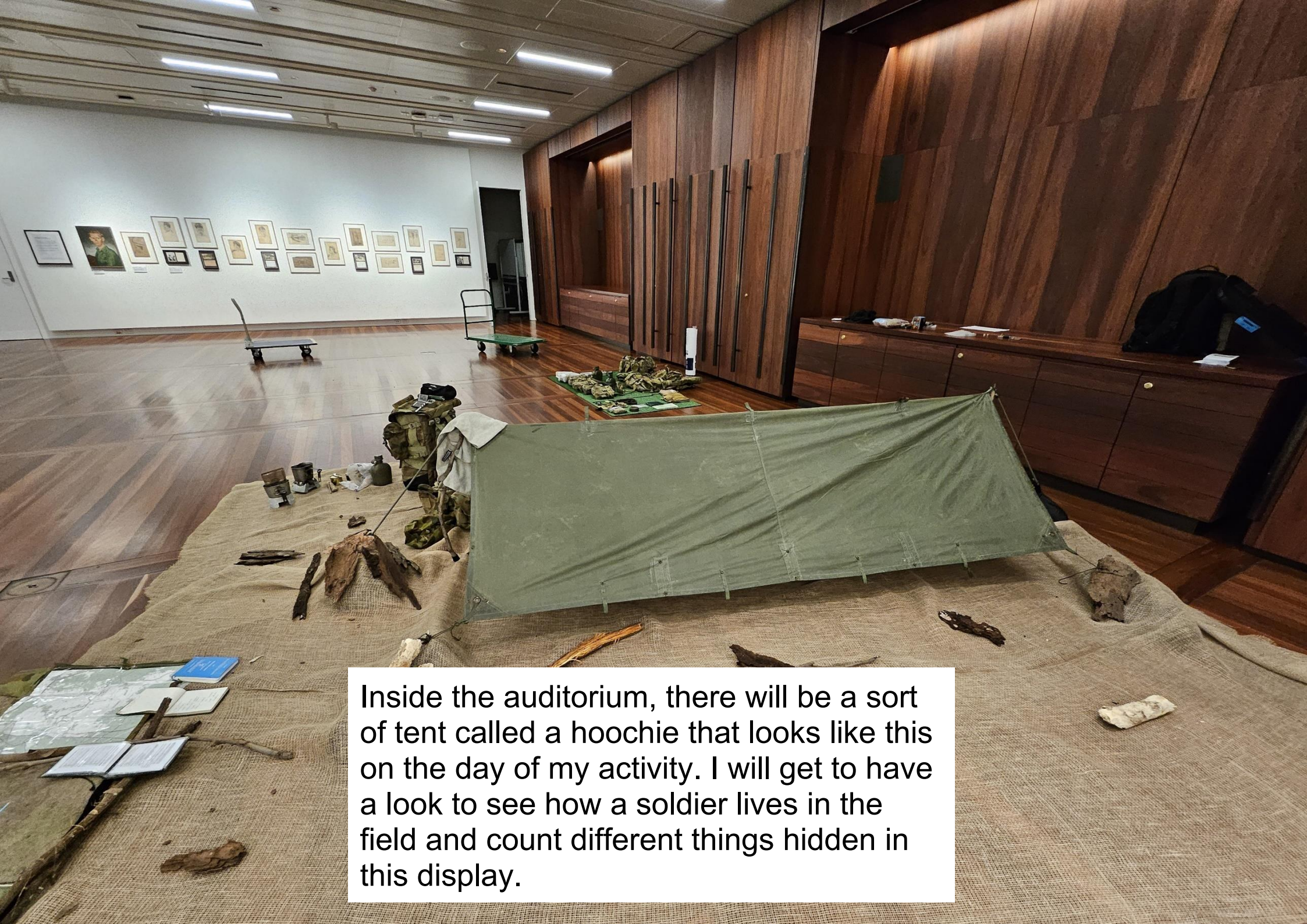




In the Auditorium there is sometimes an exhibition with things I can look at on the walls.
If the door is open, I can go in and have a look.



If I get the opportunity to look inside the Auditorium this is what I will see.

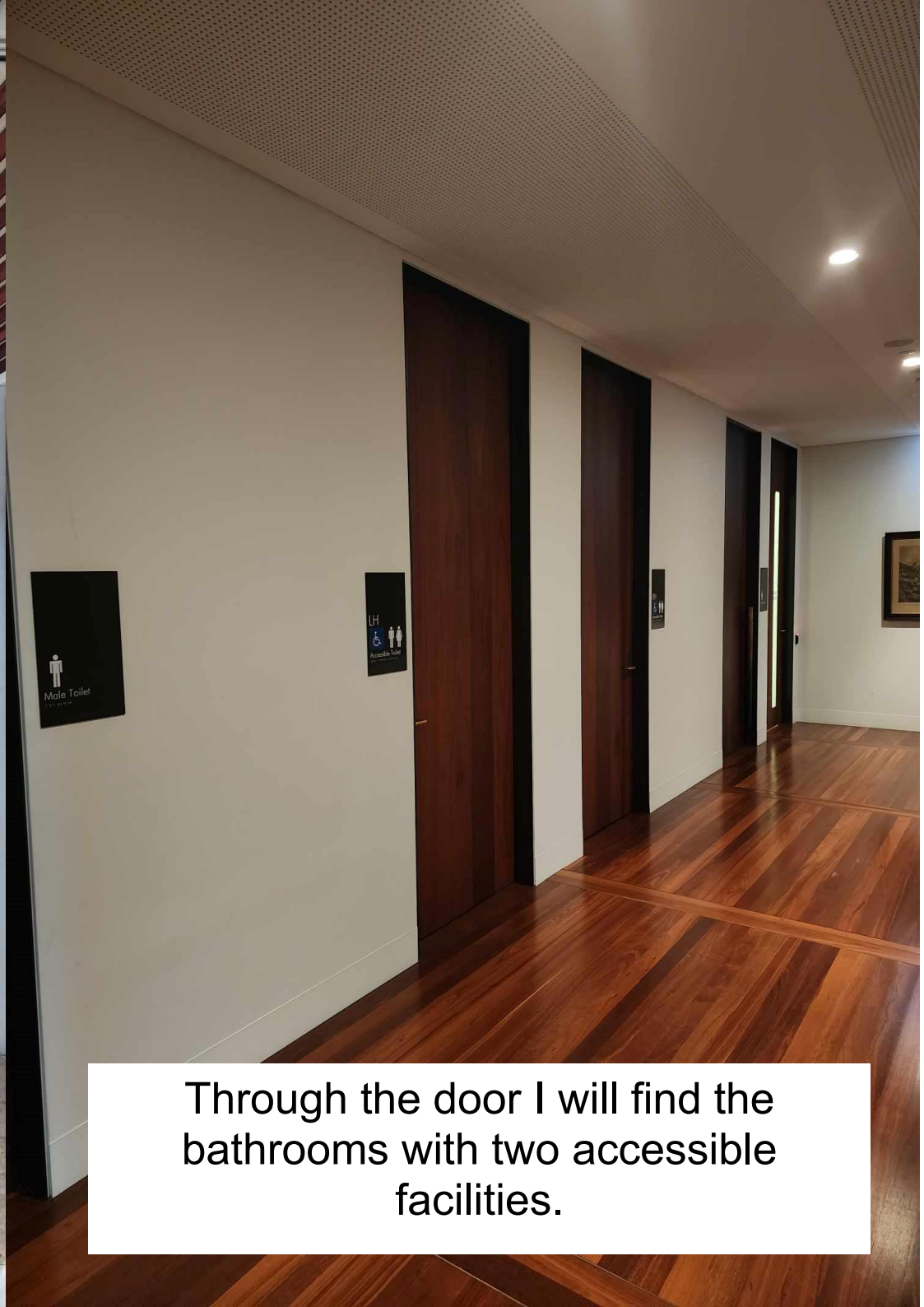


Inside the auditorium, there will be a sort of tent called a hoochie that looks like this on the day of my activity. I will get to have a look to see how a soldier lives in the field and count different things hidden in this display.

This trolley full of real military objects will also be in the auditorium. It will have signs that say I can touch and ask questions. I can try on different hats and uniforms. A staff member will be there to help me.



Next to the auditorium on the right is the entrance to the bathrooms and storage lockers. There is also a sign on the left of the door that acknowledges this.



Through the door I will find the bathrooms with two accessible facilities.



I will find the lockers on the right. I can store my bags in here while I walk around. I will need to remember the passcode I have used to lock the door to unlock it later. I can ask a staff member for help if I need it.



From the bathroom entrance, I can continue my journey around the corner following the Exhibition Gallery and Library signs.

I will see glass doors and a staircase on my left and the centre of the room on my right.



If I follow the path around to the right, I will see the Centenary Exhibition on my left.



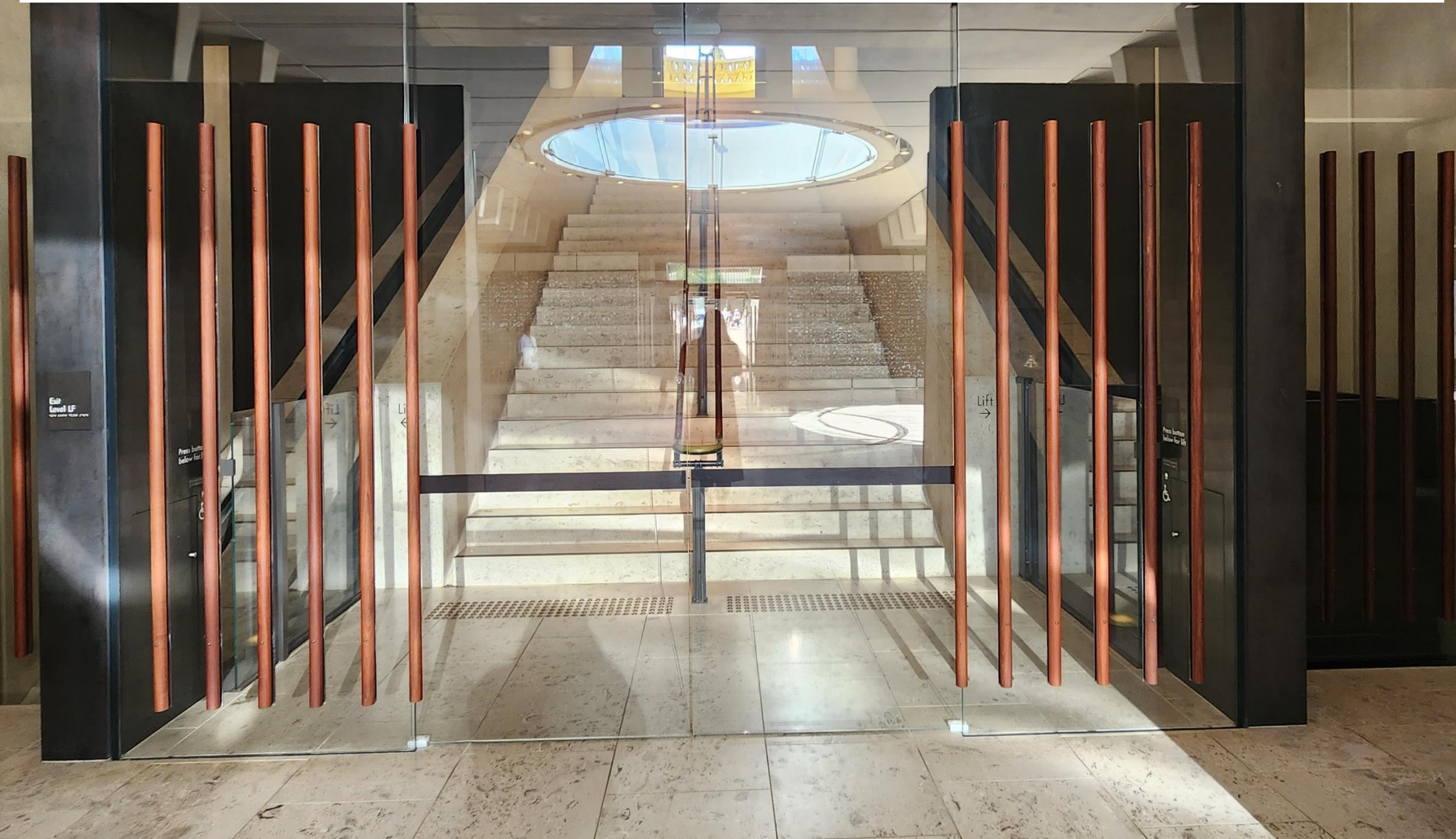
At the end of the corridor, I will see the library. I can enter the library and speak to the librarians if I have any questions.



I can visit the Centenary Exhibition where I will find accessible touch screens, information, artefacts, and sculptures. The lighting in here is dim. However, there are screens with bright images. Whilst it is quiet in here, I might find the sensory elements overwhelming, and that is okay. I can ask a staff member to tell me about the Exhibition.



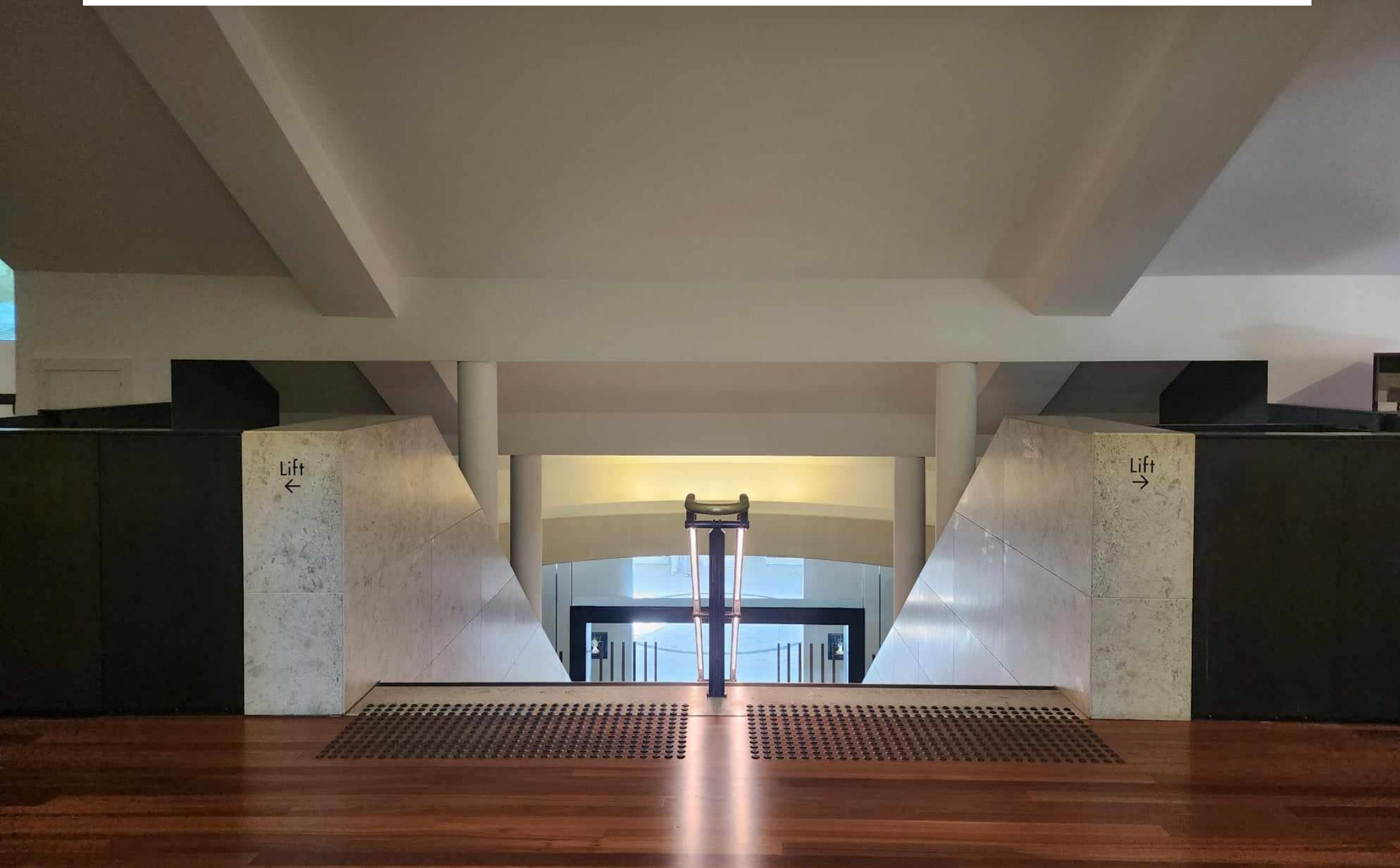
To get to the Hall of Memory, the shop, and another exhibition, I will go through the glass doors and up the stairs. However, they are stone and might be slippery, so I may want to use the handrail for extra support.



If I need to, I can use the lift to go upstairs. The lift can suit people with a wide range of disabilities. It does take a little bit longer to use, so if I wish to attend the 11am service I will need to leave some extra time on my journey there. I may use the lift with my family and support people. There is a support bar if I find the lift unsteady. If I require assistance to use the lift a member of staff will be more than happy to support me.



I can also access the lifts from the top of the stairs located on the left and right.





At the top of the stairs, I will find the shop on my left. In front of me I will see a statue called *Sacrifice* in the Hall of Silence.

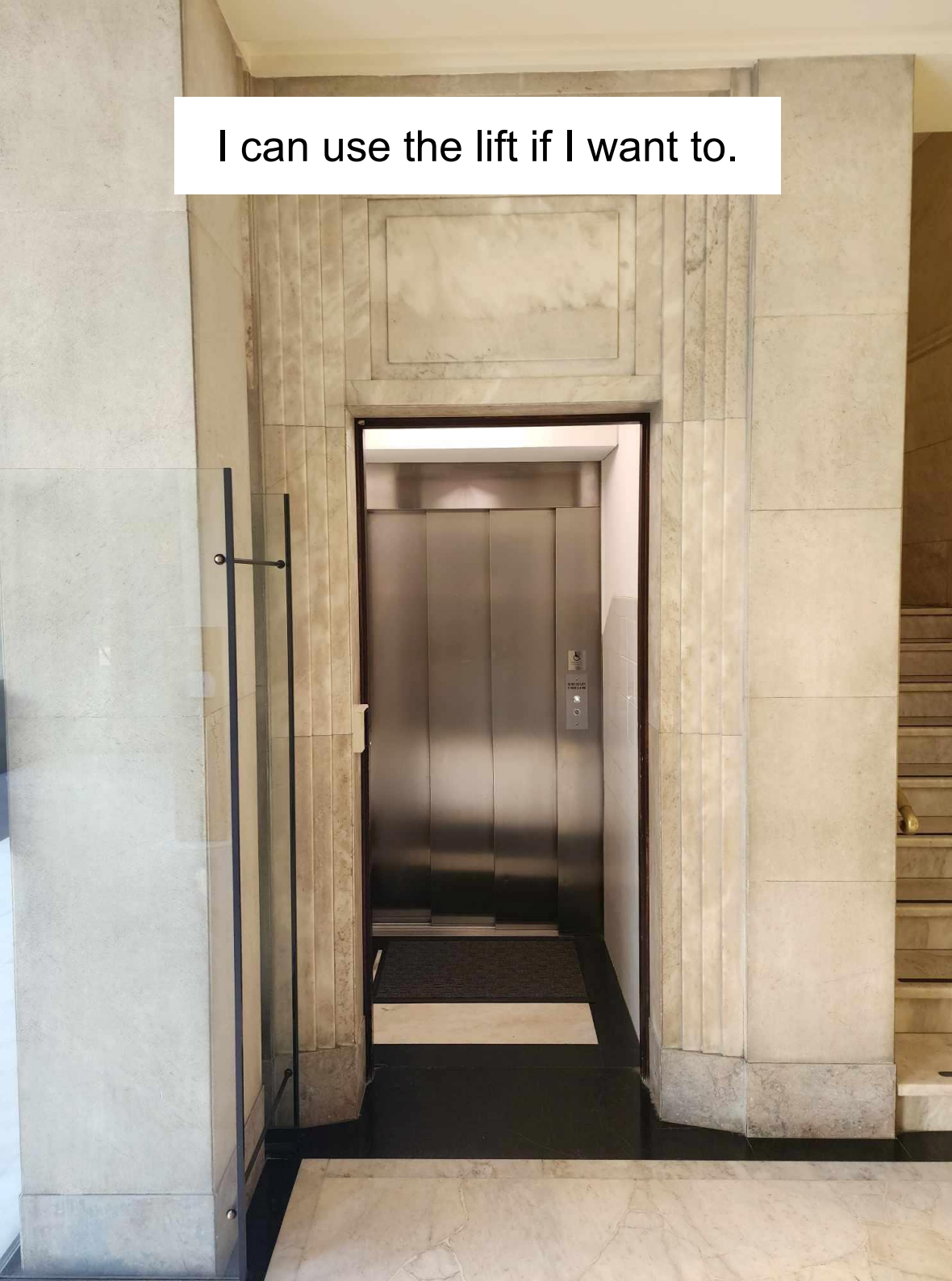


In the shop I will find a range of items and memorabilia. If I wish to attend the 11am Service of Remembrance, I can go through the glass sliding doors located to the left of the reception desk.

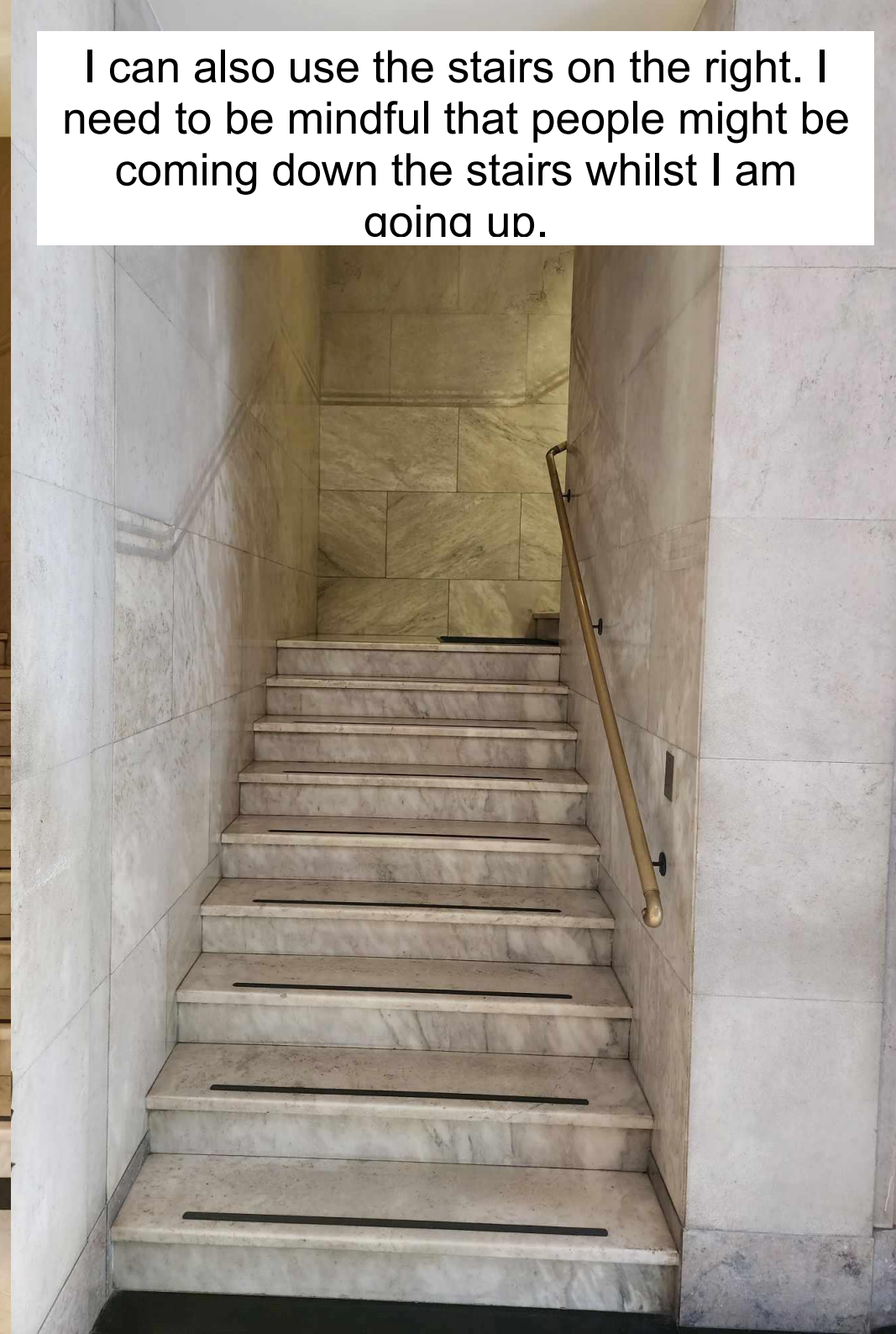


Once I have exited the shop, I will see *Sacrifice* on my right. In this area I will see the lift on my left and the stairs on my right.

I can use the lift if I want to.



I can also use the stairs on the right. I need to be mindful that people might be coming down the stairs whilst I am going up.



At the top of the stairs is the Hall of Memory. It is a quiet place, but I might hear road noise, people talking and a voice over the speaker. This space has echoes. It might be cold or windy because it is open to the outside.



I will also see the Flame of Remembrance. I cannot go into this area.

PLEASE
DO NOT SIT
ON THE
STAIRS

There are some rules I need to follow when I visit the Memorial. I can't sit on the exterior stairs. If I need to sit down during my visit there is seating inside, as well as portable chairs I can take with me throughout the day.

These are the stairs I can't sit on. I can find this reminder on a sign located at the top of the stairs.



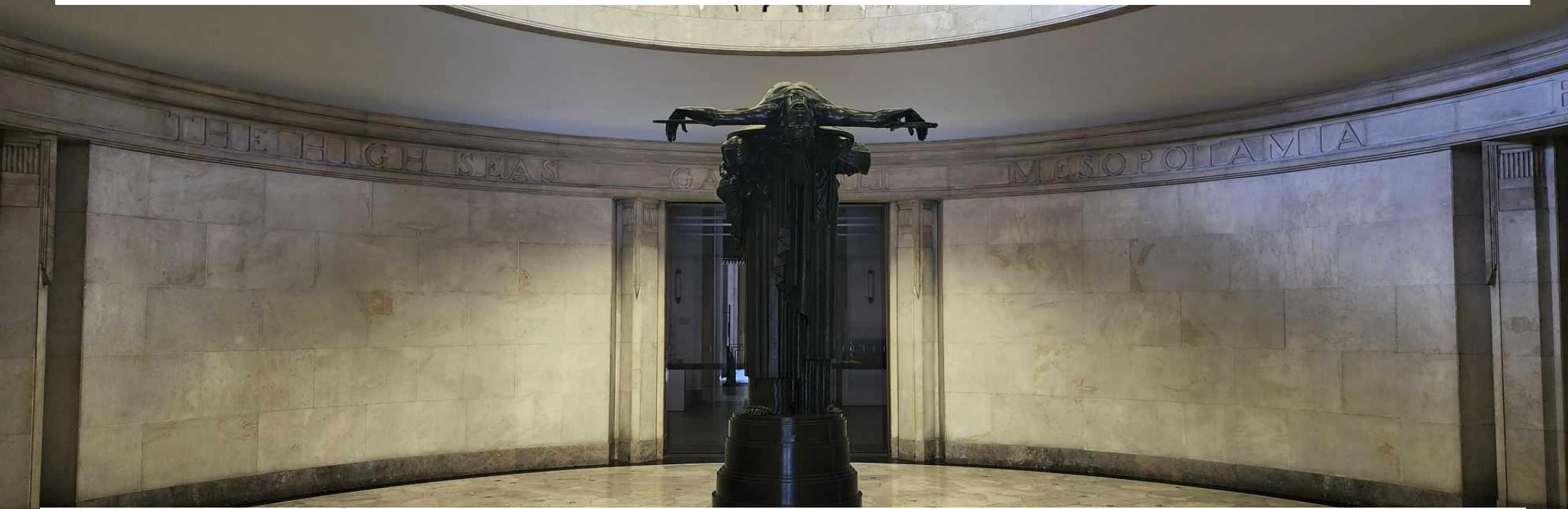
Once I have looked around and at the exterior, I can have a look at the exhibition in the Assembly Hall. I find this by going back down the lift or stairs and back through the Memorial Shop. At the end of the hallway is the entrance to the exhibition.



The objects in here change as the purpose of the exhibition changes. Even if I have been in here before I might want to have a look again.



This is where the 11am Service of Remembrance takes place every day. This includes a poem called The Ode, a bugle playing The Last Post, then a minute of silence followed by another bugle call known as The Rouse. If I have a star, I can let it go into the Hall of Silence at the end of The Rouse, but I need to get instructions from a staff member first.



The Service of Remembrance is an important daily event where we remember people who have made the ultimate sacrifice for Australia. It is important during this ceremony that I try my best to be mindful of others. I can do this by staying as still and quiet as I can. If I find this difficult, that is okay too. I know that I am doing my best to be respectful and I know others appreciate me trying.

Daily Service of Remembrance

Each day, at 11am, the Anzac Memorial pauses to remember the men and women who died during their service. You are invited to participate in this short ceremony held in the Hall of Memory.

What might I want to know about the Star Ceremony?

The Stars are released into the Well of Contemplation from the Hall of Memory. Each paper gold star represents a service person from NSW, who died while serving their country. Pre-printed stars have the details of a service person killed in service of their country. Blank Stars can be provided to participants that wish to write a specific name on a star.

Stars released into the well are collected each week and will be kept onsite. All stars will then be cremated at the Rookwood Cemetery, and the ashes carried on annual pilgrimages to key battlefield sites around the world.

If I have a question, I can contact the Anzac Memorial team using the email or phone number below:



Email: manager@anzacmemorial.nsw.gov.au
Phone: (02) 8262 2900

ANZAC MEMORIAL
HYDE PARK SYDNEY